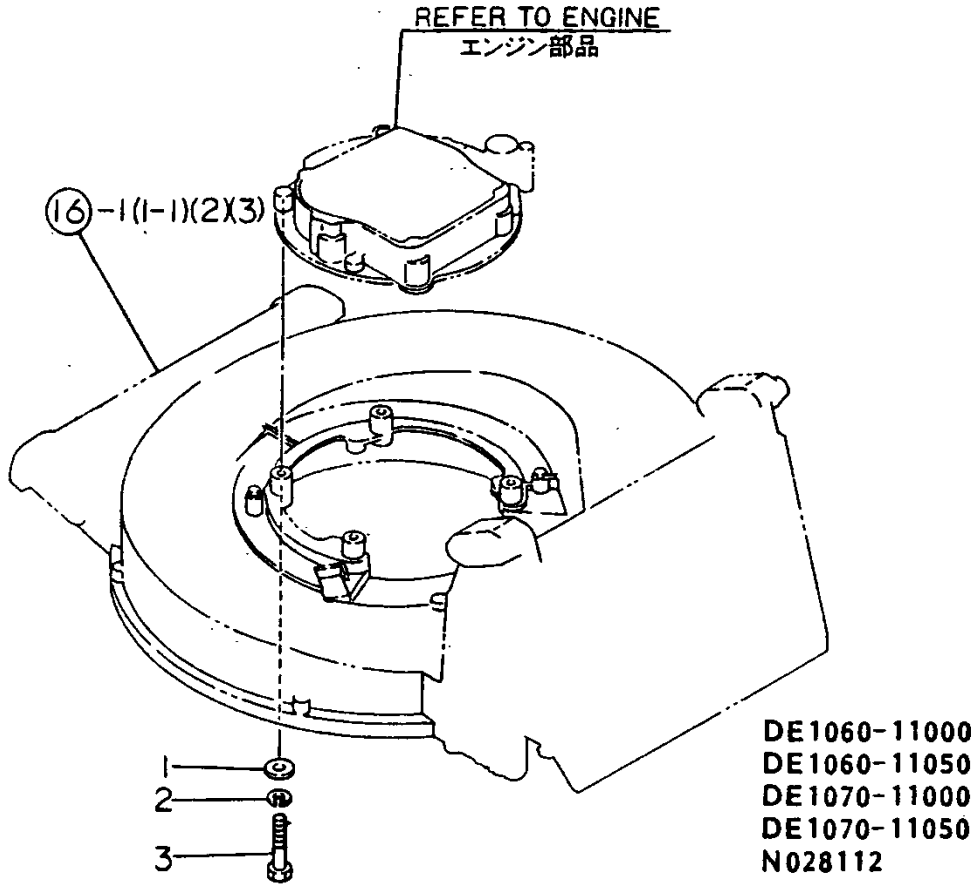


Fig.1. ENGINE INSTALLING

1. ENGINE INSTALLING



NPC-1695 1. ENGINE INSTALLING

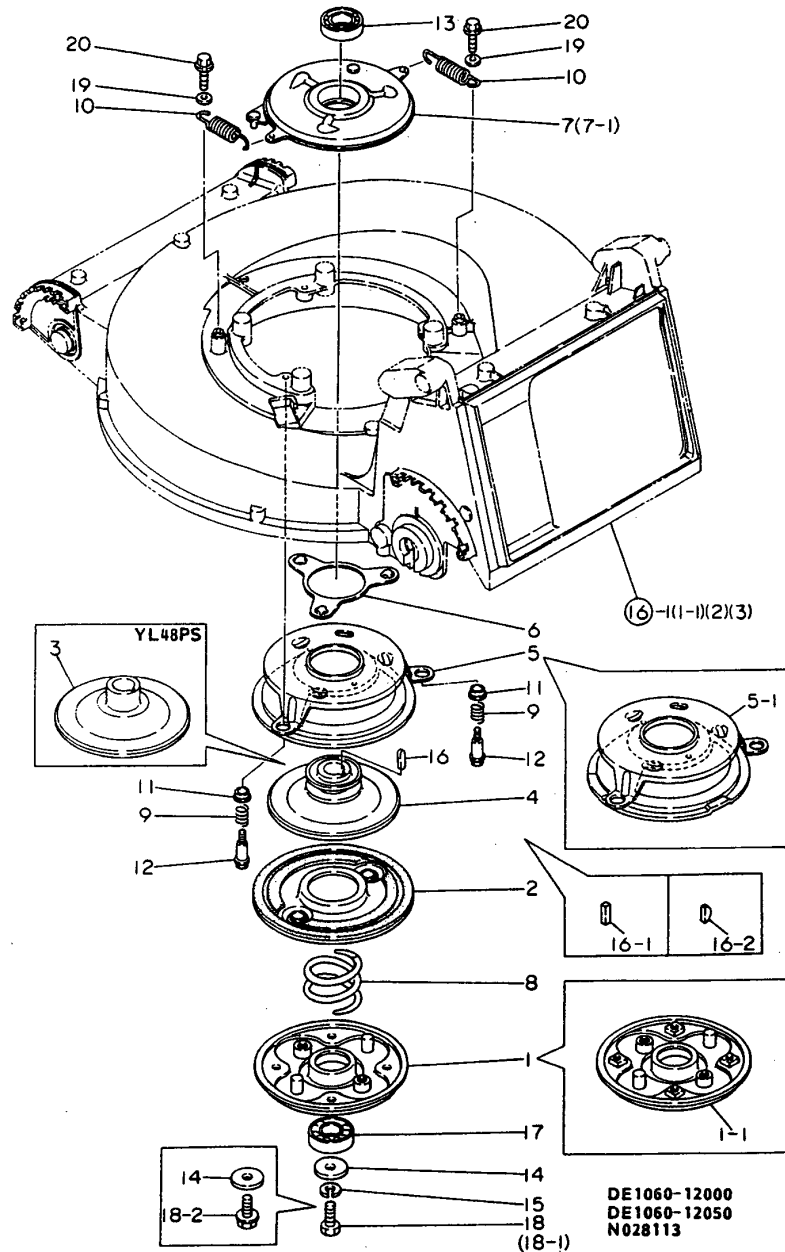
(A)=YL48PS (D)=YL53TSE
 (B)=YL48TS (E)=YL48TSE
 (C)=YL53TS (F)=YL53TSY(E)

REF.	LEV.	PARTS NO.	DESCRIPTION	QTY						I	R
				(A)	(B)	(C)	(D)	(E)	(F)		
1	1	22137-080000	WASHER 8, POLISHED	4	4	4	4	4	4		
2	1	22217-080000	SPRING WASHER 8	4	4	4	4	4	4		
3	1	26117-080452	BOLT M 8X 45	4	4	4	4	4	4		

(A)=YL48PS (D)=YL53TSE
 (B)=YL48TS (E)=YL48TSE
 (C)=YL53TS (F)=YL53TSY(E)

Fig.2. CLUTCH

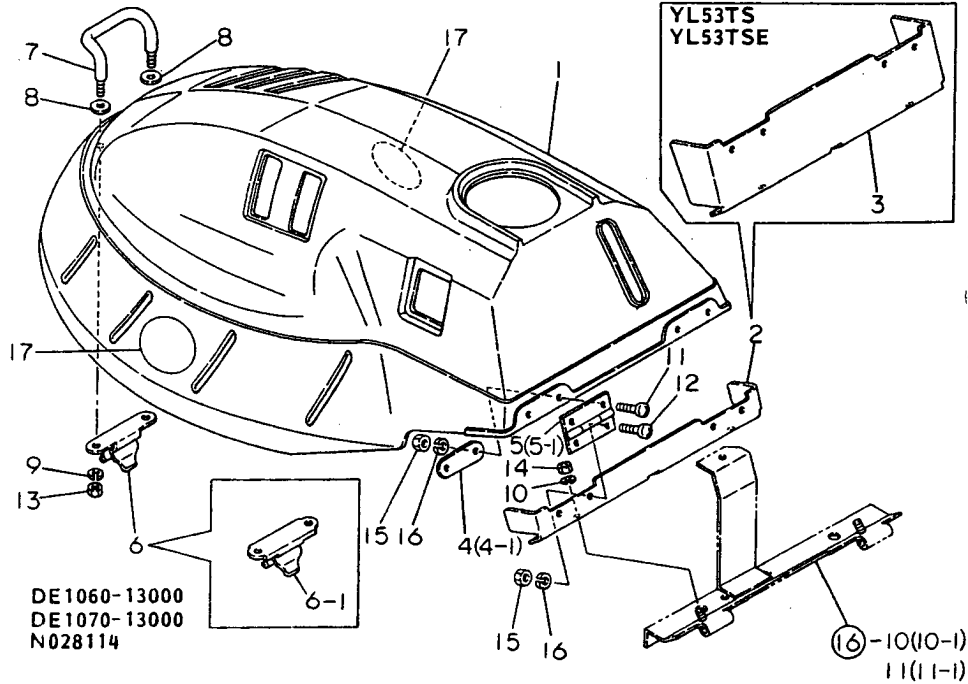
2. CLUTCH



REF.	LEV.	PARTS NO.	DESCRIPTION	QTY						I	R
				(A)	(B)	(C)	(D)	(E)	(F)		
1	1	1E1060-12010	PLATE,MAIN	1	1	1	1				
1-1	1	1E1060-12011	PLATE,MAIN	1	1	1	1	1	1	1	S
		(A=F610001) (B=F610001) (C=F610001) (D=F610001)									
2	1	1E1060-12100	DISK	1	1	1	1	1	1	1	
3	1	1E1060-12150	DRUM P,DRIVE	1							
3-1	1	1E1060-12151	DRUM P,DRIVE	1							S
		(A=F710001)									
4	1	1E1060-12160	DRUM T,DRIVE		1	1	1				
4-1	1	1E1060-12161	DRUM T,DRIVE		1	1	1	1	1	1	S
		(B=F710001) (C=F710001) (D=F710001)									
5	1	1E1060-12170	PLATE,DISK	1	1	1	1				
5-1	1	1E1060-12171	PLATE,DISC	1	1	1	1	1	1	1	R
		(A=F610001) (B=F610001) (C=F610001) (D=F610001)									
6	1	1E1060-12200	BRACKET,BOWL	1	1	1	1	1	1	1	
7-1	1	1E1060-12251	RETAINER,DISC BALL	1	1	1	1	1	1	1	N
		(A=F610001) (B=F610001) (C=F610001) (D=F610001)									
8	1	1E1060-12300	SPRING,CLUTCH	1	1	1	1	1	1	1	
9	1	1E1060-12310	SPRING,GUIDE	3	3	3	3	3	3	3	
10	1	1E1060-12320	SPRING,CLUTCH RETURN	2	2	2	2	2	2	2	
11	1	1E1060-12340	METAL 106,FLANGED	3	3	3	3	3	3	3	
12	1	1E1060-12350	BOLT 6X12,STEPPED	3	3	3	3	3	3	3	
13	1	1E1060-12970	BEARING 60/22UU	1	1	1	1	1	1	1	
14	1	1A1040-46460	WASHER 10X33X4.5	1	1	1	1	1	1	1	
15	1	22217-100000	SPRING WASHER 10	1	1	1	1	1	1	1	Z
		(A=F710001) (B=F710001) (C=F710001) (D=F710001)									
16-1	1	22551-050150	KEY 5X15	1	1	1	1				N
		(A=FXXXXXX) (B=FXXXXXX) (C=FXXXXXX) (D=FXXXXXX)									
16-2	1	1E1060-12980	KEY 4X19,WOODRUFF	1	1	1	1	1	1	1	S
		(A=F710001) (B=F710001) (C=F710001) (D=F710001)									
17	1	24104-062044	BALL BEARING	1	1	1	1	1	1	1	
18	1	26112-100302	BOLT 10X30	1	1	1	1				
18-1	1	26116-100302	BOLT M10X 30 PLATED	1	1	1	1				N
		(A=F510001) (B=F510001) (C=F510001) (D=F510001)									
18-2	1	1E1060-12990	BOLT 10X28,COLLAR HD	1	1	1	1	1	1	1	S
		(A=F710001) (B=F710001) (C=F710001) (D=F710001)									
19	1	1E4030-99230	WASHER 6X16X1	2	2	2	2	2	2	2	W
		(A=FXXXXXX) (B=FXXXXXX) (C=FXXXXXX) (D=FXXXXXX)									
20	1	26476-060122	BOLT M 6X 12,TAPPING	2	2	2	2	2	2	2	W
		(A=FXXXXXX) (B=FXXXXXX) (C=FXXXXXX) (D=FXXXXXX)									

Fig.3. ENGINE COVER

3. ENGINE COVER



NPC-1695 3. ENGINE COVER

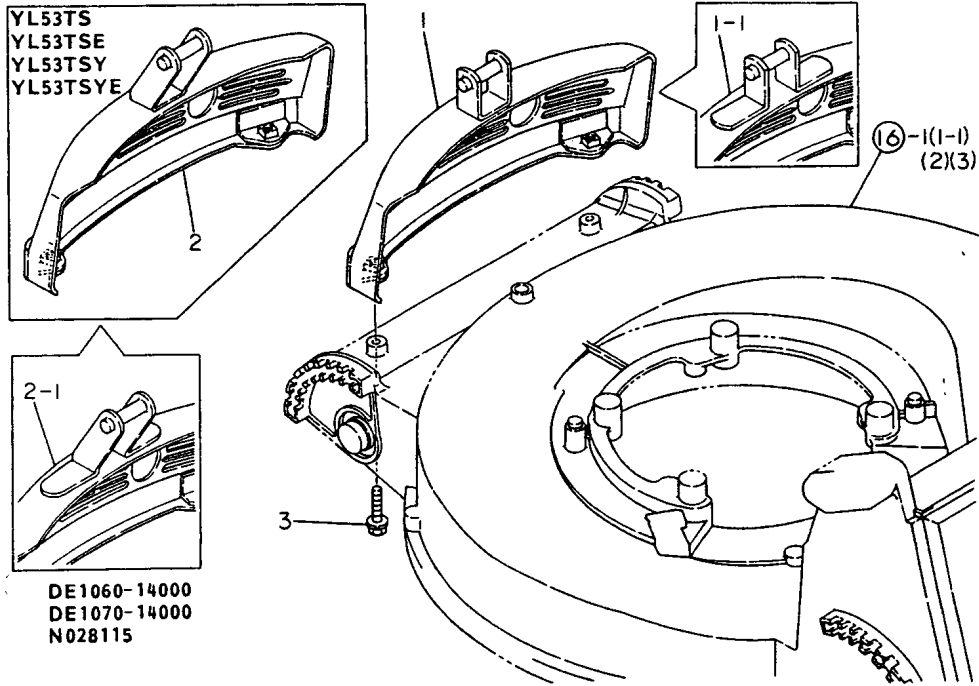
(A)=YL48PS (D)=YL53TSE
 (B)=YL48TS (E)=YL48TSE
 (C)=YL53TS (F)=YL53TSY(E)

REF.	LEV.	PARTS NO.	DESCRIPTION	QTY						I	R
				(A)	(B)	(C)	(D)	(E)	(F)		
1	1	1E1060-13060	BONNET	1	1	1	1	1	1		
2	1	1E1060-13100	HOLDER 48,BONNET	1	1			1	1		
3	1	1E1070-13250	HOLDER 53,BONNET			1	1				
4	1	1E1060-13110	PLATE,STIFFENING	2	2	2	2				
4-1	1	1E1060-13111 (A=F610001) (B=F610001) (C=F610001) (D=F610001)	PLATE,CONTACT	2	2	2	2	2	2	2	R
5	1	1E1060-13120	HINGE 51	2	2	2	2				
5-1	1	1E1060-13121 (A=F610001) (B=F610001) (C=F610001) (D=F610001)	HINGE 51	2	2	2	2	2	2	2	R
6	1	1E1060-13130	ROCKER,BONNET	1	1	1	1				
6-1	1	1E1060-13131 (A=F610001) (B=F610001) (C=F610001) (D=F610001)	LOCKER,BONNET	1	1	1	1	1	1	1	N
7	1	1E1060-13150	HANDLE,BONNET	1	1	1	1	1	1	1	
8	1	1E4030-99230	WASHER 6X16X1	2	2	2	2	2	2	2	
9	1	22217-060000	SPRING WASHER 6	2	2	2	2	2	2	2	
10	1	22217-060000	SPRING WASHER 6	2	2	2	2	2	2	2	
11	1	26557-030102	SCREW M 3X 10	4	4	4	4	4	4	4	
12	1	26557-030102	SCREW M 3X 10	4	4	4	4	4	4	4	
13	1	26717-060002	NUT 6	2	2	2	2	2	2	2	
14	1	26717-060002	NUT 6	2	2	2	2	2	2	2	
15	1	26717-030002	NUT M 3	8	8	8	8	8	8	8	
16	1	22217-030000	SPRING WASHER 3	8	8	8	8	8	8	8	
17	1	1E1060-13200 (A=F610001) (B=F610001) (C=F610001) (D=F610001)	SEAL,TRANSPARENT	2	2	2	2	2	2	2	W

Remarks
)7E1060-99060 BONNET ASSY IS
 EXCLUSIVE FOR FRENCH VERSION
)7E1060-99080 BONNET ASSY IS
 EXCLUSIVE FOR U.K. VERSION

Fig.4. MUFFLER COVER

4. MUFFLER COVER



NPC-1695 4. MUFFLER COVER

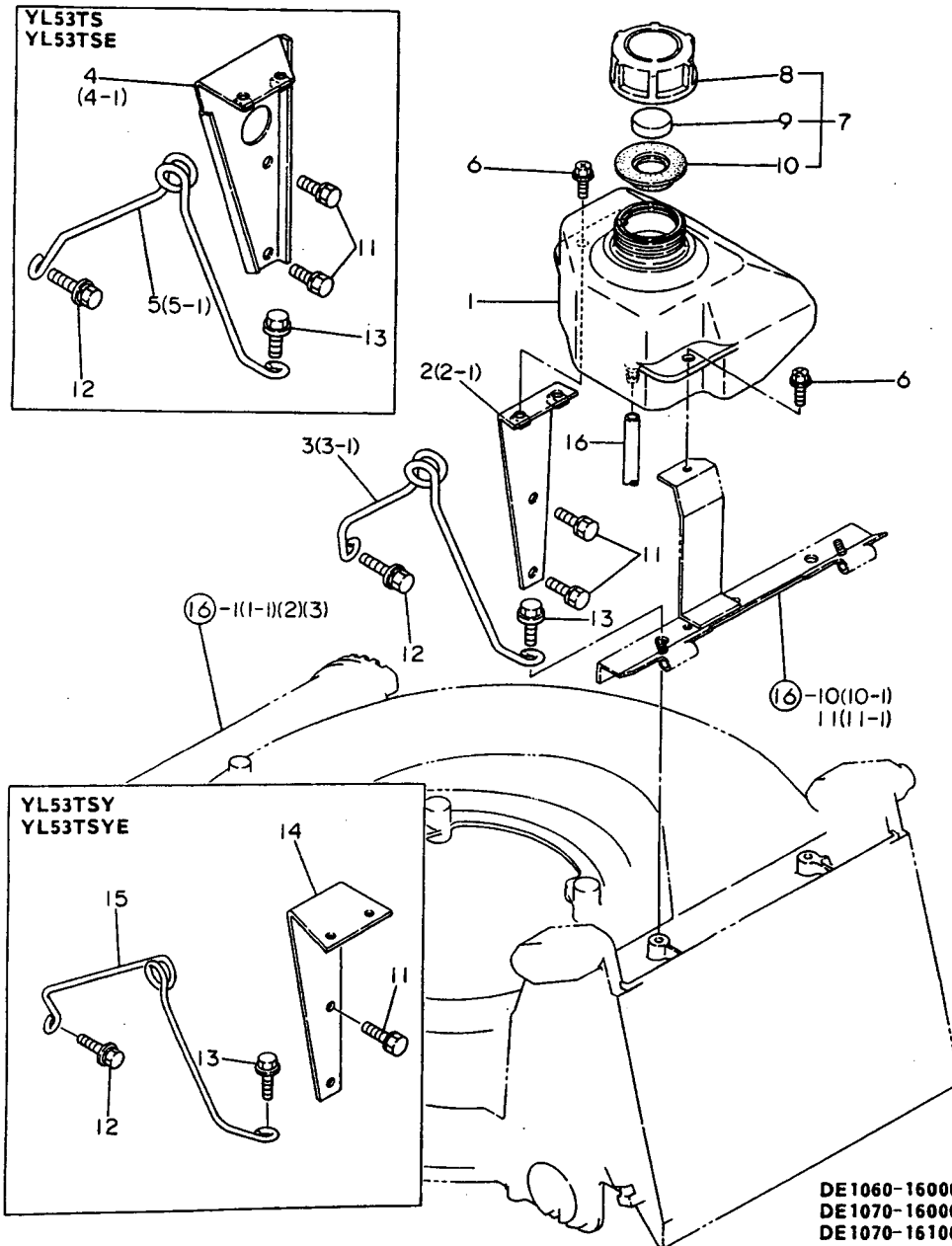
(A)=YL48PS (D)=YL53TSE
 (B)=YL48TS (E)=YL48TSE
 (C)=YL53TS (F)=YL53TSY(E)

REF.	LEV.	PARTS NO.	DESCRIPTION	QTY						I	R
				(A)	(B)	(C)	(D)	(E)	(F)		
1	1	1E1060-14010	COVER 48,MUFFLER	1	1						
1-1	1	1E1060-14011 (A=F610001)	COVER,MUFFLER (B=F610001)	1	1			1			N
I	1-2	1E1060-14012 (A=FXXXXXX)	COVER 48,MUFFLER (B=FXXXXXX)	1	1				1		N
2	1	1E1070-14100	COVER 53,MUFFLER			1	1				
2-1	1	1E1070-14101 (C=F610001)	COVER,MUFFLER (D=F610001)			1	1			1	N
I	2-2	1E1070-14102 (C=FXXXXXX)	COVER 53,MUFFLER (D=FXXXXXX)			1	1			1	N
3	1	26018-060302	BOLT 6X30	2	2	2	2	2	2	2	

(A)=YL48PS (D)=YL53TSE
 (B)=YL48TS (E)=YL48TSE
 (C)=YL53TS (F)=YL53TSY(E)

Fig.5. FUEL OIL TANK

5. FUEL OIL TANK

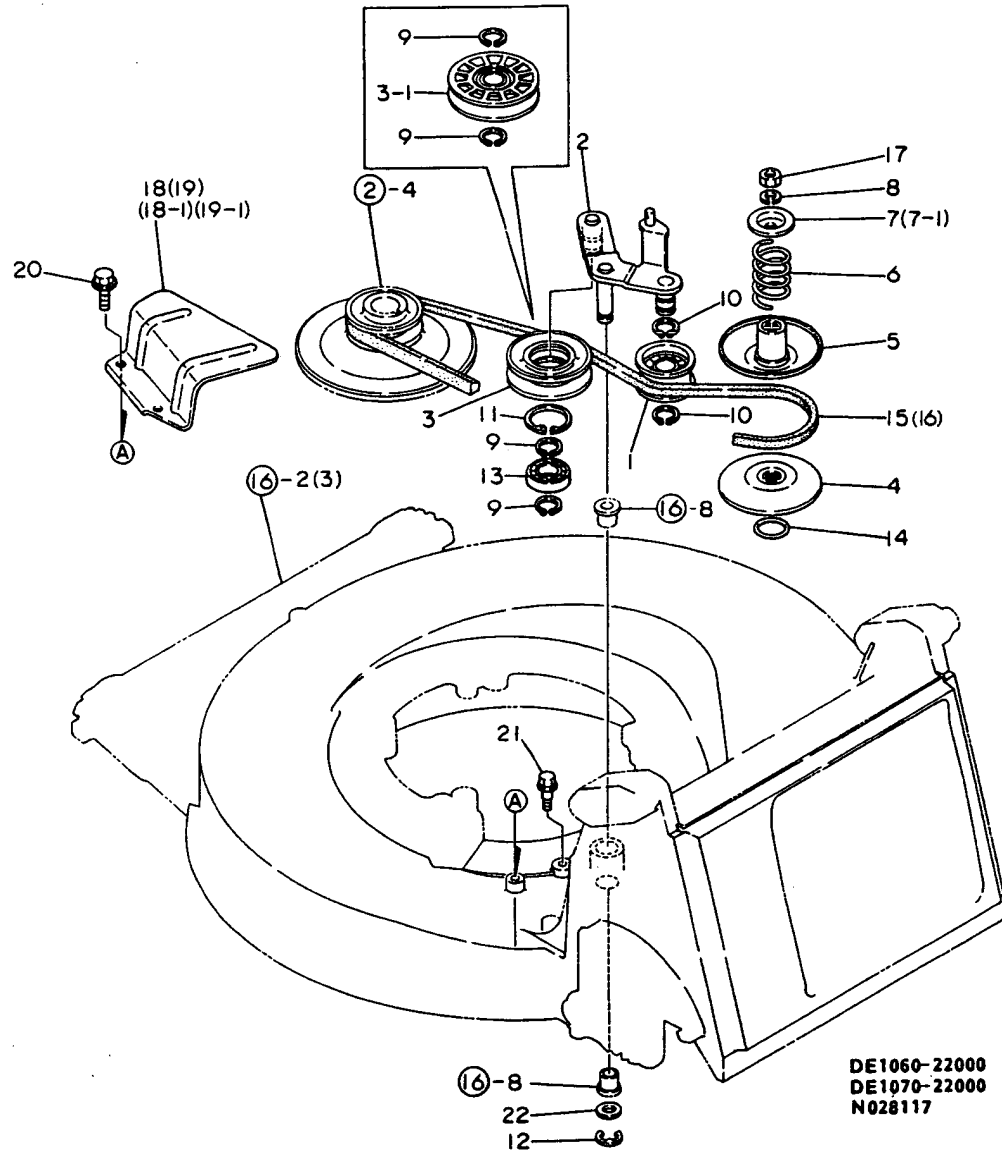


REF.	LEV.	PARTS NO.	DESCRIPTION	QTY						I	R
				(A)	(B)	(C)	(D)	(E)	(F)		
1	1	1E1060-16050	TANK,FUEL	1	1	1	1	1	1		
2-1	1	1E1060-16151 (A=F610001) (B=F610001)	MOUNT,TANK FRONT	1	1			1			N
3	1	1E1060-16170	HOLDER 48,RECOIL	1	1						
3-1	1	1E1060-16171 (A=F610001) (B=F610001)	HOLDER,RECOIL	1	1				1		N
4-1	1	1E1070-16191 (C=F610001) (D=F610001)	MOUNT,TANK FRONT			1	1				N
5	1	1E1070-16210	HOLDER 53,RECOIL			1	1				
5-1	1	1E1070-16211 (C=F610001) (D=F610001)	HOLDER,RECOIL			1	1				N
6	1	1E6250-34560	BOLT 6X16,CR.	3	3	3	3	3	3		
7	1	7A1120-61522	FUEL CAP ASSY.	1	1	1	1	1	1		
8	2	1A1120-61522	CAP,FUEL	1	1	1	1	1	1		
9	2	1A1120-61531	PACKING,FUEL CAP	1	1	1	1	1	1		
10	2	1A1120-61541	SEAL,RUBBER	1	1	1	1	1	1		
11	1	26016-080164	BOLT M 8X 16	2	2	2	2	2	2		
12	1	26018-080254	BOLT M 8X 25	1	1	1	1	1	1		
13	1	26476-080202	BOLT 8X20,TAPPING	1	1	1	1	1	1		
14	1	1E1070-16100	MOUNT,TANK FRONT								1
15	1	1E1070-16230	HOLDER,RECOIL								1
16	1	1E1070-16250	HOSE 250,FUEL								1

DE1060-16000
 DE1070-16000
 DE1070-16100
 N028116

Fig.6. STEPLESS CHANGE GEAR

6. STEPLESS CHANGE GEAR



DE1060-22000
DE1070-22000
N028117

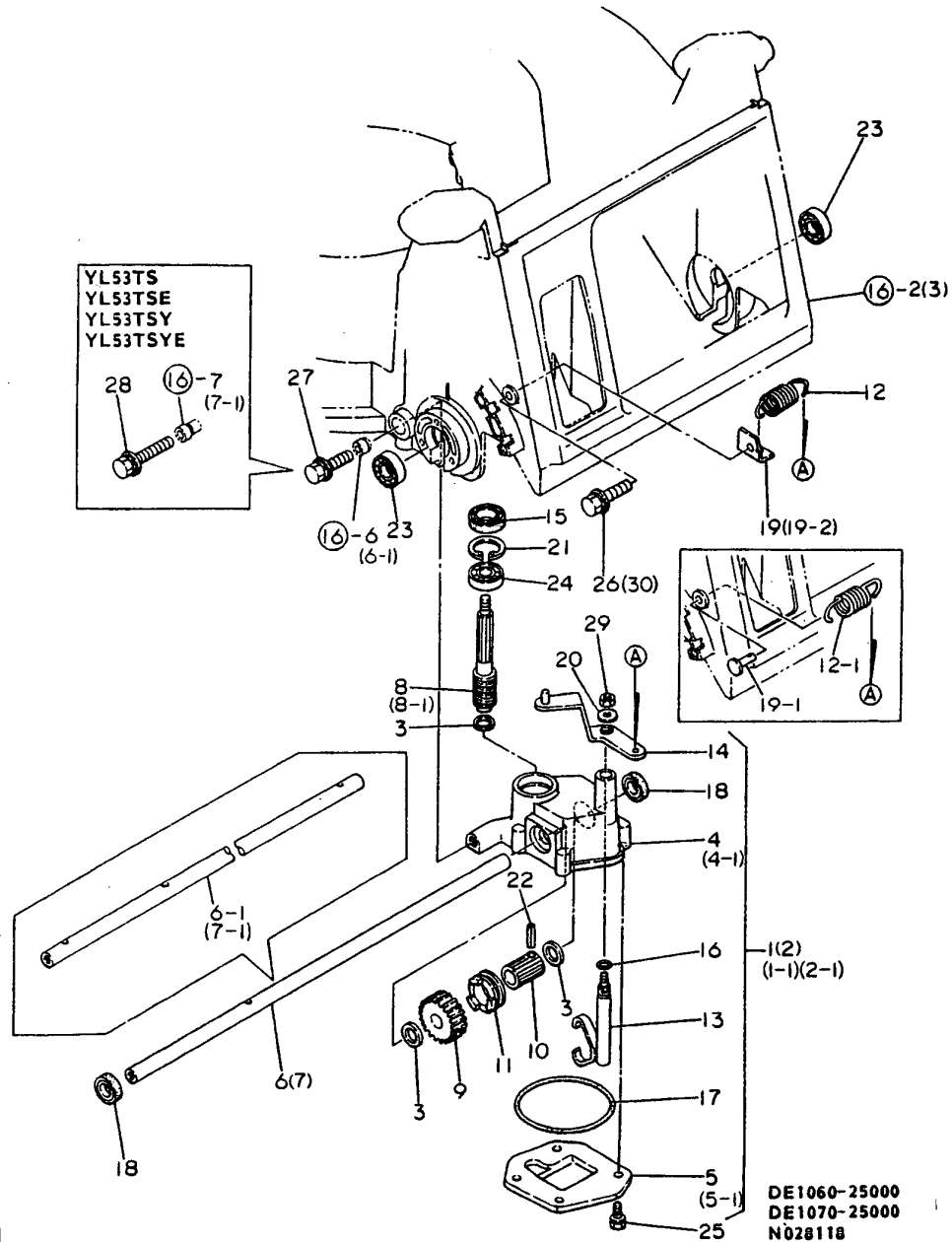
NPC-1695 6. STEPLESS CHANGE GEAR

(A)=YL48PS (D)=YL53TSE
(B)=YL48TS (E)=YL48TSE
(C)=YL53TS (F)=YL53TSY(E)

REF.	LEV.	PARTS NO.	DESCRIPTION	QTY						I	R
				(A)	(B)	(C)	(D)	(E)	(F)		
1	1	1E4060-10040	ROLLER,TENSION		1	1	1	1	1		
2	1	1E1060-22100	ARM,TENSION		1	1	1				
2-1	1	1E1060-22101	ARM,TENSION		1	1	1	1	1	1	S
		(B=FXXXXXX) (C=FXXXXXX) (D=FXXXXXX)									
3	1	1E1060-22150	PULLEY 66,TENSION		1	1	1				
3-1	1	1E1060-22151	PULLEY 70,TENSION		1	1	1	1	1	1	S
		(B=FXXXXXX) (C=FXXXXXX) (D=FXXXXXX)									
4	1	1E1060-22300	PULLEY 81A		1	1	1	1	1	1	
5	1	1E1060-22350	PULLEY 81B		1	1	1	1	1	1	
6	1	1E1060-22380	SPRING 30,COIL		1	1	1	1	1	1	
7	1	1E1060-22390	SHOE 836,SPRING		1	1	1	1	1	1	
7-1	1	1E1060-22391	SPRING SHOE 836		1	1	1	1	1	1	N
		(B=F610001) (C=F610001) (D=F610001)									
8	1	22217-080000	SPRING WASHER 8		1	1	1	1	1	1	
9	1	22242-000150	CIRCLIP 15		2	2	2	2	2	2	
10	1	22242-000150	CIRCLIP 15		2	2	2	2	2	2	
11	1	22252-000320	CIRCLIP 32		1	1	1				Z
		(B=FXXXXXX) (C=FXXXXXX) (D=FXXXXXX)									
12	1	22272-000100	CIRCLIP E-10		1	1	1	1	1	1	
13	1	24104-060024	BALL BEARING 6002UU		1	1	1				Z
		(B=FXXXXXX) (C=FXXXXXX) (D=FXXXXXX)									
14	1	24311-000110	O-RING 1A P-11.0		1	1	1	1	1	1	
15	1	1E1060-22200	V-BELT SP, A 30H		1			1			
16	1	1E1070-22210	V-BELT SP, A 33H			1	1			1	
17	1	26717-080002	NUT M 8		1	1	1	1	1	1	
18	1	1E1060-22450	COVER,BELT 48		1						
18-1	1	1E1060-22451	COVER,BELT		1						R
		(B=F610001)									
18-2	1	1E1060-22452	COVER,BELT		1				1		N
		(B=FXXXXXX)									
19	1	1E1070-22460	COVER,BELT 53			1	1				
19-1	1	1E1070-22461	COVER,BELT			1	1				R
		(C=F610001) (D=F610001)									
19-2	1	1E1070-22462	COVER,BELT			1	1			1	N
		(C=FXXXXXX) (D=FXXXXXX)									
20	1	26476-060122	BOLT M 6X 12,TAPPING		2	2	2	2	2	2	
21	1	1E1060-12350	BOLT 6X12,STEPPED		1	1	1				Z
		(B=F610001) (C=F610001) (D=F610001)									
22	1	1A1070-53150	SHIM 12X24X1.2		1	1	1	1	1	1	W
		(B=FXXXXXX) (C=FXXXXXX) (D=FXXXXXX)									

Fig.7. GEAR CASE

7. GEAR CASE



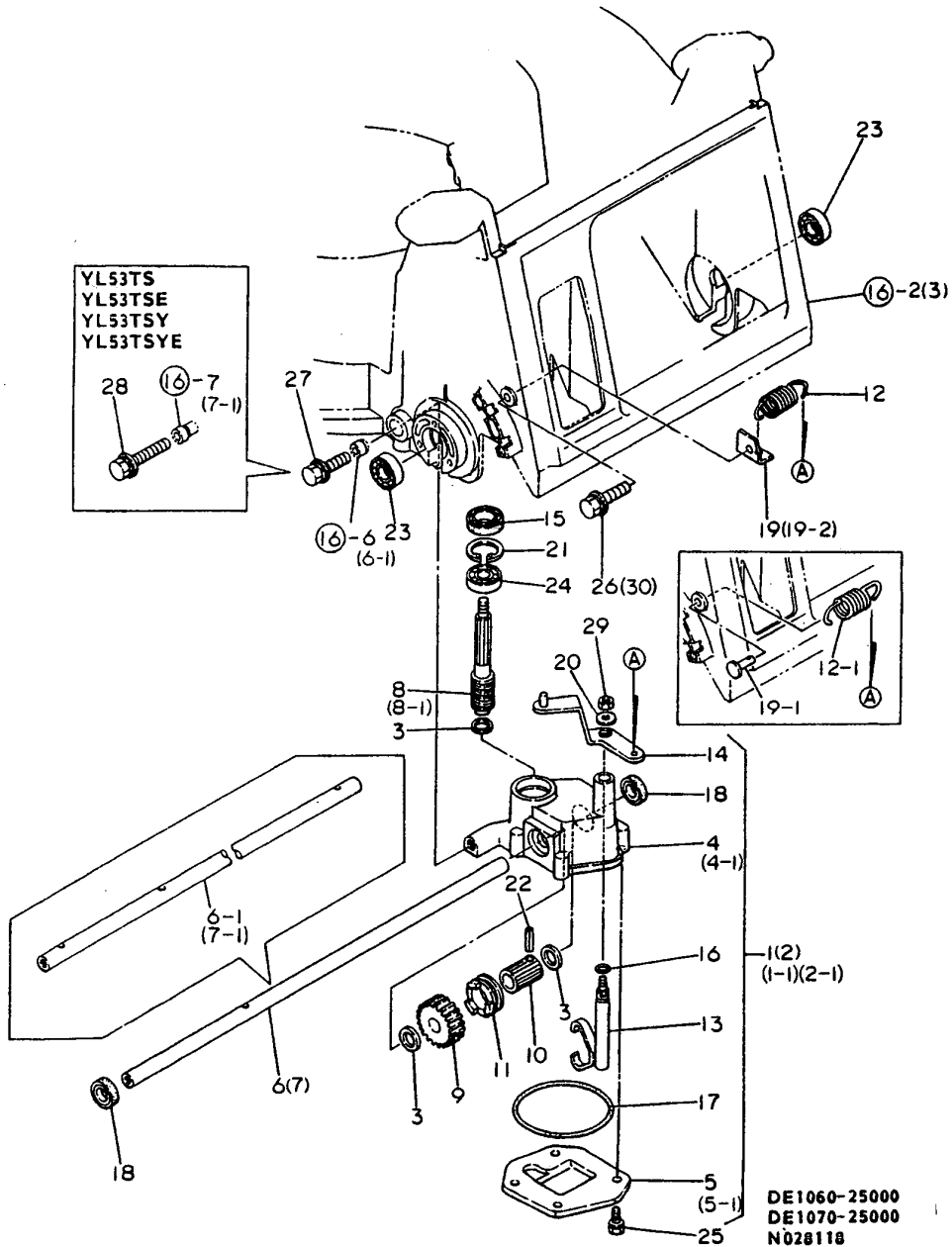
(A)=YL48PS (D)=YL53TSE
 (B)=YL48TS (E)=YL48TSE
 (C)=YL53TS (F)=YL53TSY(E)

REF.	LEV.	PARTS NO.	DESCRIPTION	QTY						I	R
				(A)	(B)	(C)	(D)	(E)	(F)		
1	1	7E1060-99010	WORM CASE ASSY,48		1						
1-1	1	7E1060-99011 (B=F610001)	WERM CASE ASSY.48		1			1			S
2	1	7E1070-99010	WORM CASE ASSY.53			1	1				
2-1	1	7E1070-99011 (C=F610001)	WORM CASE ASSY.53			1	1			1	S
3	2	1E4370-24010	LINER 12X17X1K			3	3	3	3	3	
4-1	2	1E1060-25052 (B=F610001)	CASE,WORM			1	1	1	1	1	N
5	2	1E1060-25060	COVER,WORM CASE		1	1	1				
5-1	2	1E1060-25061 (B=F610001)	COVER,WORM CASE		1	1	1	1	1	1	R
6	2	1E1060-25100	SHAFT 48,DRIVE		1						
6-1	2	1E1060-25101 (B=F610001)	SHAFT,DRIVE		1				1		S
7	2	1E1070-25100	SHAFT 53,DRIVE			1	1				
7-1	2	1E1070-25101 (C=F610001)	SHAFT,DRIVE			1	1			1	S
8	2	1E1060-25110	WORM		1	1	1				
8-1	2	1E1060-25111 (B=F610001)	WORM		1	1	1	1	1	1	N
9	2	1E1060-25120	WHEEL,WORM		1	1	1	1	1	1	
10	2	1E1060-25130	SHAFT,SPLINE		1	1	1	1	1	1	
10-1	2	1E1060-25131 (B=FXXXXXX)	SHAFT,SPLINE		1	1	1	1	1	1	N
11	2	1E1060-25140 (C=FXXXXXX)	CLUTCH,AXLE		1	1	1	1	1	1	
12	2	1E1060-25150 (B=F610001)	SPRING,AXLE CLUTCH		1	1	1				
12-1	2	1E1060-25151 (B=F610001)	SPRING,AXLE CLUTCH		1	1	1				N
12-2	2	1E1060-25152 (B=FXXXXXX)	SPRING,MN.SHFT.CLTCH		1	1	1	1	1	1	N
13	2	1E1060-25200 (C=FXXXXXX)	FORK,CLUTCH		1	1	1	1	1	1	
14	2	1E1060-25250	ARM,CLUTCH		1	1	1				
14-1	2	1E1060-25251 (B=FXXXXXX)	ARM,CLUTCH		1	1	1	1	1	1	N
15	2	1E1060-25970	OIL SEAL SC17287		1	1	1	1	1	1	
16	2	24311-000070	O-RING 1A P-7.0		1	1	1	1	1	1	
17	2	24321-000650	O-RING 1A G-65.0		1	1	1	1	1	1	
18	2	24411-122507	OIL SEAL SC12257		2	2	2	2	2	2	
19	1	1E1060-25350	HOOK,SPRING		1	1	1	1	1	1	
19-1	1	1E1060-25370 (B=F610001)	PIN 6X20,FLAT HEAD		1	1	1				N
19-2	1	1E1060-25350 (B=FXXXXXX)	HOOK,SPRING		1	1	1	1	1	1	N
20	1	22137-060000	WASHER 6, POLISHED		1	1	1	1	1	1	
21	1	22252-000280	CIRCLIP 28		1	1	1	1	1	1	
22	1	22351-050020	SPRING PIN 5X20		1	1	1	1	1	1	
23	1	24104-060014	BALL BEARING 6001UU		2	2	2	2	2	2	
24	1	24107-060014	BALL BEARING 6001ZZ		1	1	1	1	1	1	
25	1	26016-060124	BOLT 6X12 W/L.W.		4	4	4	4	4	4	
26	1	26018-060204 (B=F610001)	BOLT M 6X 20		1	1	1	1	1	1	Z
27	1	26018-080254 (C=F610001)	BOLT M 8X 25		1				1		

++ CONTINUE ++

Fig.7. GEAR CASE

7. GEAR CASE



DE1060-25000
 DE1070-25000
 N028118

NPC-1695 7. GEAR CASE

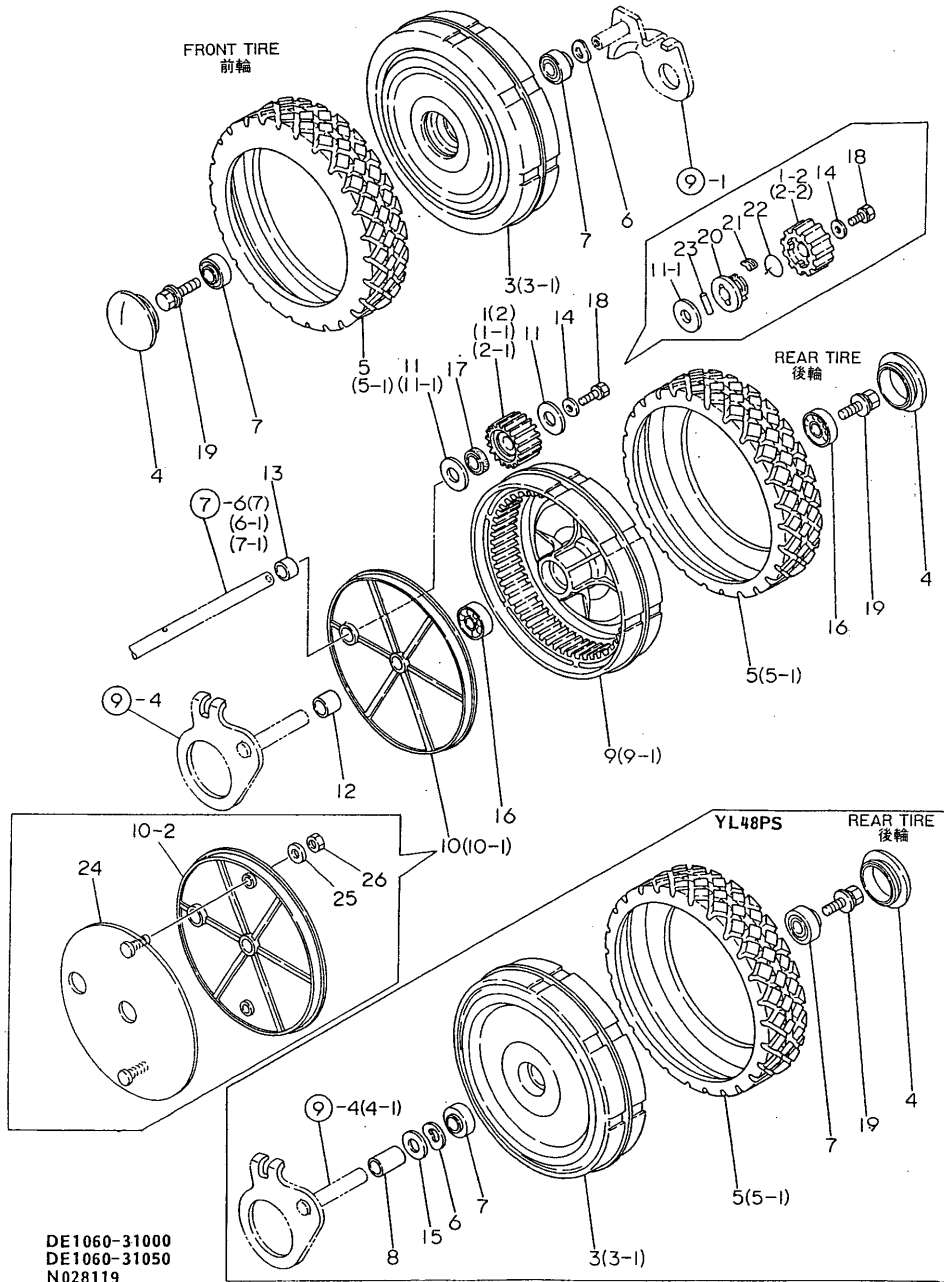
(A)=YL48PS (D)=YL53TSE
 (B)=YL48TS (E)=YL48TSE
 (C)=YL53TS (F)=YL53TSY(E)

REF.	LEV.	PARTS NO.	DESCRIPTION	QTY						I	R
				(A)	(B)	(C)	(D)	(E)	(F)		
28	1	26018-080354	BOLT 8X35			1	1			1	
29	1	26347-060002	U-NUT 6		1	1	1	1	1	1	
30	1	26018-060204	BOLT M 6X 20		1	1	1	1	1	1	W

(B)=FXXXXXX (C)=FXXXXXX (D)=FXXXXXX

Fig.8. WHEEL

8. WHEEL



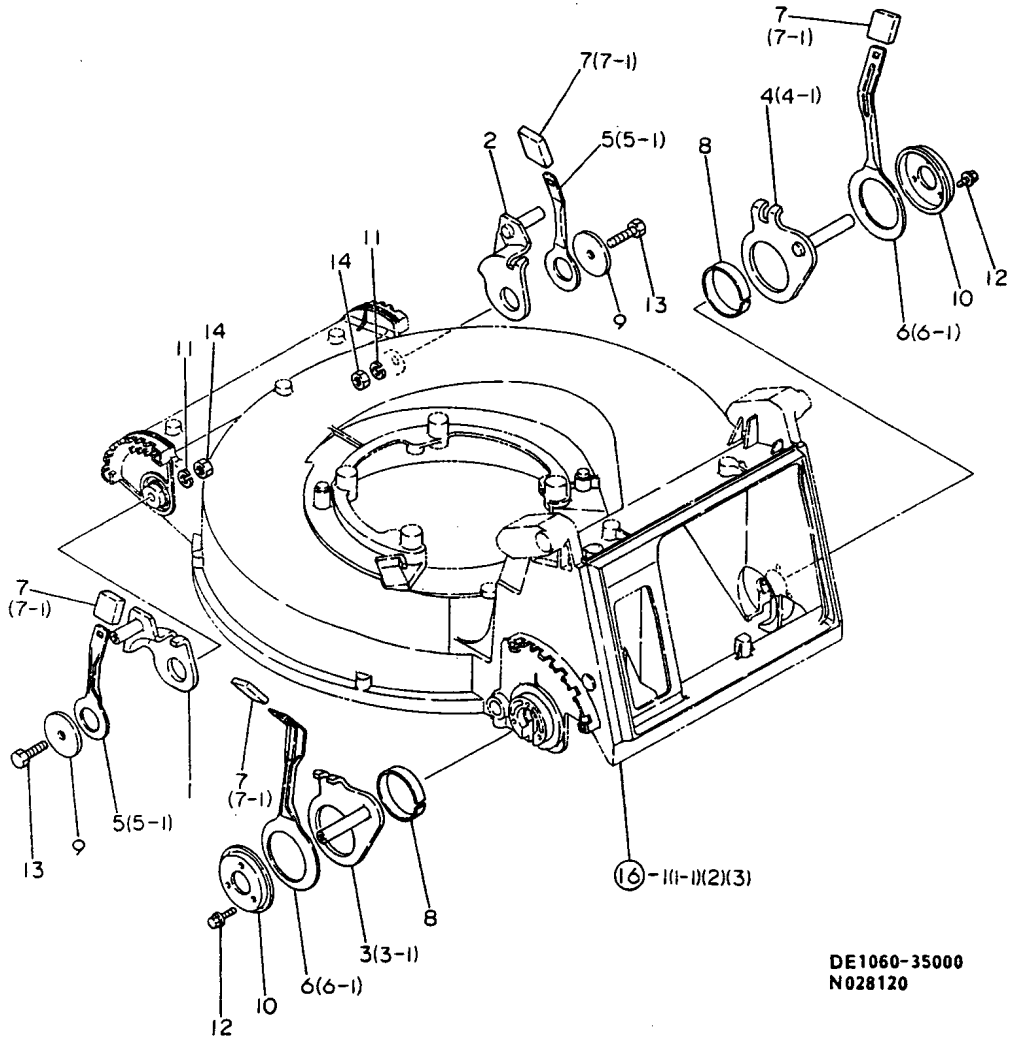
DE1060-31000
DE1060-31050
N028119

(A)=YL48PS (D)=YL53TSE
(B)=YL48TS (E)=YL48TSE
(C)=YL53TS (F)=YL53TSY(E)

REF.	LEV.	PARTS NO.	DESCRIPTION	QTY						I	R
				(A)	(B)	(C)	(D)	(E)	(F)		
1	1	7E1060-99020	CLUTCH L PINION ASSY		1	1	1				
1-1	1	7E1060-99021 (B=FXXXXXX) (C=FXXXXXX) (D=FXXXXXX)	CLUTCH L PINION ASSY		1	1	1				N
1-2	1	1E1060-25380 (B=F610001) (C=F610001) (D=F610001)	PINION ASSY (19)		1	1	1	1	1	1	S
2	1	7E1060-99030	CLUTCH R PINION ASSY		1	1	1				
2-1	1	7E1060-99031 (B=FXXXXXX) (C=FXXXXXX) (D=FXXXXXX)	CLUTCH R PINION ASSY		1	1	1				N
2-2	1	1E1060-25380 (B=F610001) (C=F610001) (D=F610001)	PINION ASSY (19)		1	1	1	1	1	1	S
3-1	1	1E1060-31011 (A=F610001) (B=F610001) (C=F610001) (D=F610001)	WHEEL	4	2	2	2	2	2	2	N
4	1	1E1060-31020	CAP,WHEEL	4	4	4	4	4	4	4	
5	1	1E1060-31050	TIRE	4	4	4	4	4	4	4	
5-1	1	1E1060-31052	TIRE	4	4	4	4	4	4	4	N
6	1	1E1060-31100 (A=F610001) (B=F610001) (C=F610001) (D=F610001)	SPRING 12.7X23.LOCK	4	2	2	2	2	2	2	
7	1	1E1060-31450	SHAFT HOLDER	8	4	4	4	4	4	4	
8	1	1E1060-31460	COLLAR 12.7X17.3X21.	2							
9-1	1	1E1060-31551 (B=F610001) (C=F610001) (D=F610001)	WHEEL,REAR		2	2	2	2	2	2	N
10	1	1E1060-31560	COVER,WHEEL	2	2	2					
10-1	1	1E1060-31561 (B=F610001) (C=F610001) (D=F610001)	COVER,WHEEL	2	2	2	2	2	2	2	N
10-2	1	1E1060-31562 (B=FF810070) (C=FXXXXXX) (D=FXXXXXX)	COVER,WHEEL	2	2	2	2	2	2	2	N
11	1	1E1060-31900	WASHER 12X29X1.6	4	4	4					
11-1	1	1E1060-31900 (B=F610001) (C=F610001) (D=F610001)	WASHER 12X29X1.6	2	2	2	2	2	2	2	K
12	1	1E1060-31910	COLLAR 12.7X17.3X15	2	2	2	2	2	2	2	
13	1	1E1060-31920	COLLAR 12.7X17.3X10	2	2	2	2	2	2	2	
14	1	1E4030-99230	WASHER 6X16X1	2	2	2	2	2	2	2	
15	1	22137-120000	WASHER 12,POLISHED	2							
16	1	24104-062014	BALL BEARING 6201UU	4	4	4	4	4	4	4	
17	1	24430-122204 (B=F610001) (C=F610001) (D=F610001)	OIL SEAL VC12224	2	2	2	2	2	2	2	Z
18	1	26016-060124	BOLT 6X12 W/L.W.		2	2	2	2	2	2	
19	1	26018-080164	BOLT M 8X 16	4	4	4	4	4	4	4	
20	1	1E1060-25410 (B=F610001) (C=F610001) (D=F610001)	CLUTCH	2	2	2	2	2	2	2	W
21	1	1E1060-25420 (B=F610001) (C=F610001) (D=F610001)	PAWL,CLUTCH	2	2	2	2	2	2	2	W
22	1	1E1060-25430 (B=F610001) (C=F610001) (D=F610001)	SPRING,RING	2	2	2	2	2	2	2	W
23	1	22312-040180 (B=F610001) (C=F610001) (D=F610001)	PARALLEL PIN 4X18	2	2	2	2	2	2	2	W
24	1	1S9031-31620 (B=FF810070) (C=FXXXXXX) (D=FXXXXXX)	GUARD,COVER	2	2	2	2	2	2	2	W
25	1	1E4030-99230 (B=FF810070) (C=FXXXXXX) (D=FXXXXXX)	WASHER 6X16X1	4	4	4	4	4	4	4	W
26	1	26717-060002 (B=FF810070) (C=FXXXXXX) (D=FXXXXXX)	NUT 6	4	4	4	4	4	4	4	W

Fig.9. AXLE

9. AXLE

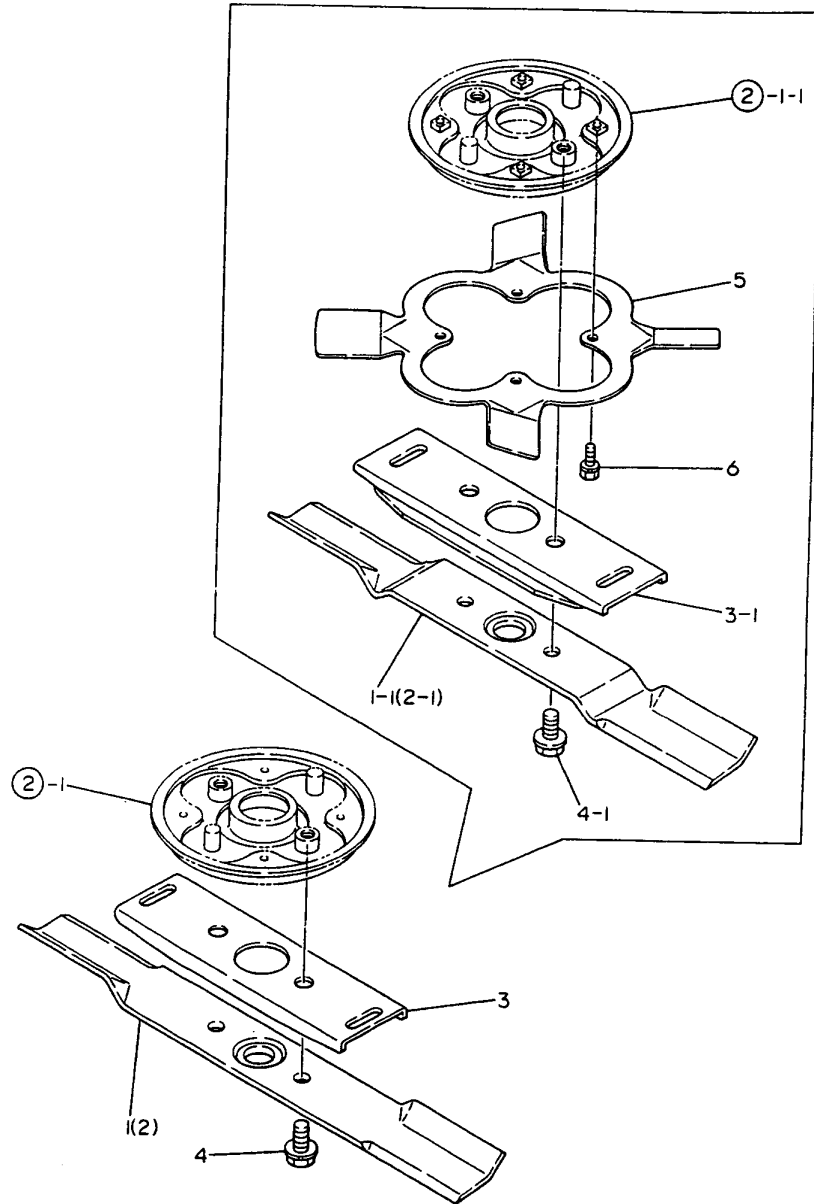


(A)=YL48PS (D)=YL53TSE
 (B)=YL48TS (E)=YL48TSE
 (C)=YL53TS (F)=YL53TSY(E)

REF.	LEV.	PARTS NO.	DESCRIPTION	QTY						I	R
				(A)	(B)	(C)	(D)	(E)	(F)		
1	1	1E1060-35010	AXLE L,FRONT	1	1	1	1	1	1		
2	1	1E1060-35050	AXLE R,FRONT	1	1	1	1	1	1		
3	1	1E1060-35080	AXLE L,REAR	1	1	1	1				
3-1	1	1E1060-35081	AXLE L,REAR	1	1	1	1	1	1		N
		(A=F610001) (B=F610001) (C=F610001) (D=F610001)									
4	1	1E1060-35120	AXLE R,REAR	1	1	1	1				
4-1	1	1E1060-35121	AXLE R,REAR	1	1	1	1	1	1	1	N
		(A=F610001) (B=F610001) (C=F610001) (D=F610001)									
5	1	1E1060-35150	LEVER,WHEEL FRONT	2	2	2	2				
5-1	1	1E1060-35151	LEVER,FRONT WHEEL	2	2	2	2	2	2		N
		(A=F610001) (B=F610001) (C=F610001) (D=F610001)									
6	1	1E1060-35160	LEVER,WHEEL REAR	2	2	2	2				
6-1	1	1E1060-35161	LEVER,REAR WHEEL	2	2	2	2				N
		(A=F610001) (B=F610001) (C=F610001) (D=F610001)									
6-2	1	1E1060-35162	LEVER,REAR WHEEL	2	2	2	2	2	2	2	N
		(A=FXXXXXXX) (B=FXXXXXXX) (C=FXXXXXXX) (D=FXXXXXXX)									
7	1	1E1060-35170	GRIP,ADJUSTING	4	4	4	4				
7-1	1	1E1060-35171	GRIP,ADJUSTING	4	4	4	4	4	4	4	N
		(A=F610001) (B=F610001) (C=F610001) (D=F610001)									
8	1	1E1060-35180	RING,AXLE RETAINING	2	2	2	2	2	2	2	
9	1	1E1060-35220	WASHER 9453	2	2	2	2	2	2	2	
10	1	1E1060-35230	KEEP PLATE,REAR	2	2	2	2	2	2	2	
11	1	22217-080000	SPRING WASHER 8	2	2	2	2	2	2	2	
12	1	26476-060122	BOLT M 6X 12,TAPPING	6	6	6	6	6	6	6	
13	1	26117-080302	BOLT M 8X 30	2	2	2	2	2	2	2	
14	1	26717-080002	NUT M 8	2	2	2	2	2	2	2	

Fig.10. BLADE

1 0. BLADE

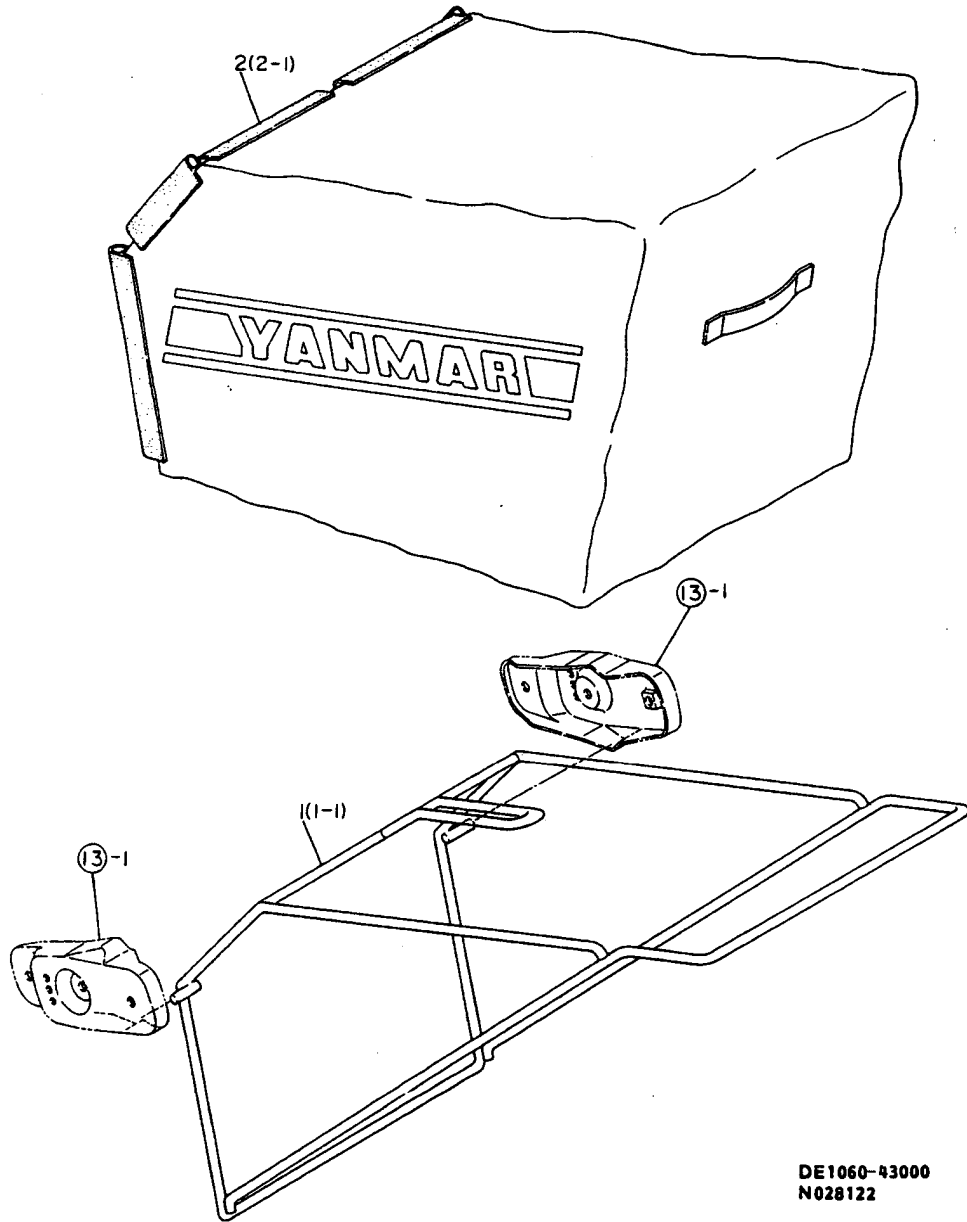


(A)=YL48PS (D)=YL53TSE
 (B)=YL48TS (E)=YL48TSE
 (C)=YL53TS (F)=YL53TSY(E)

REF.	LEV.	PARTS NO.	DESCRIPTION	QTY						I	R
				(A)	(B)	(C)	(D)	(E)	(F)		
1	1	1E1060-41050	BLADE 48	1	1						
1-1	1	1E1060-41100 (A=F610001)	BLADE 48 (B=F610001)	1	1						S
1-2	1	1E1060-41101 (A=FXXXXXX)	BLADE 48 (B=FXXXXXX)	1	1			1			N
2	1	1E1070-41050	BLADE 53			1	1				
2-1	1	1E1070-41100 (C=F610001)	BLADE 53 (D=F610001)			1	1				S
2-2	1	1E1070-41101 (C=FXXXXXX)	BLADE 53 (D=FXXXXXX)			1	1		1		N
3	1	1E1060-41060	GUIDE, BLADE	1	1	1	1				
3-1	1	1E1060-41120 (A=F610001)	GUIDE, BLEDE (B=F610001)	1	1	1	1	1	1	1	S
4	1	26016-100252	BOLT M10X 25	2	2	2	2				
4-1	1	26138-100202 (A=F610001)	BOLT 10X20, COLLAR HD (B=F610001)	2	2	2	2	2	2	2	S
5	1	1E1060-42050 (A=F610001)	FAN, BLADE (B=F610001)	1	1	1	1	1	1	1	W
6	1	26016-060124 (A=F610001)	BOLT 6X12 W/L.W. (B=F610001)	4	4	4	4	4	4	4	W

Fig.11. CATCHER

1 1. CATCHER



DE1060-43000
N028122

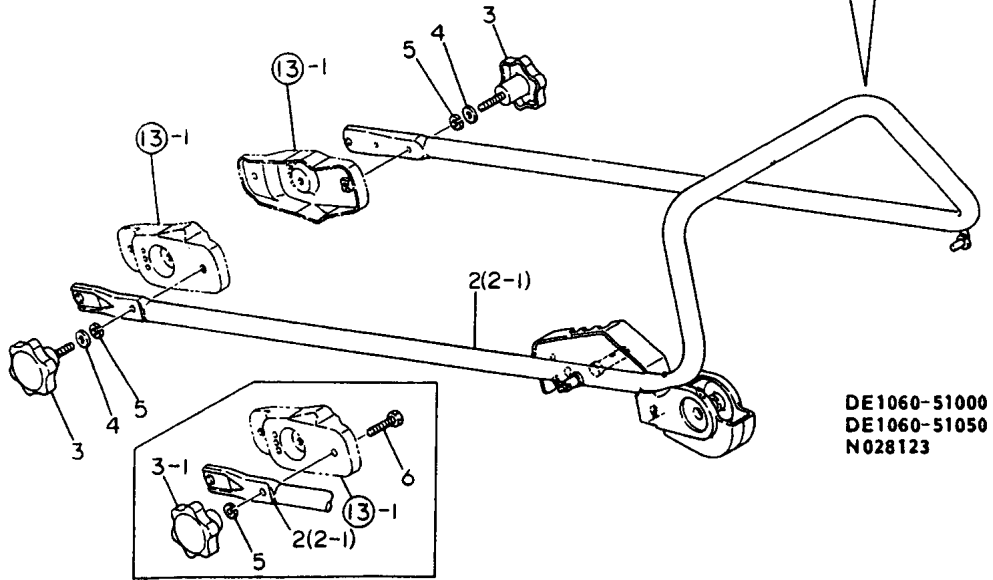
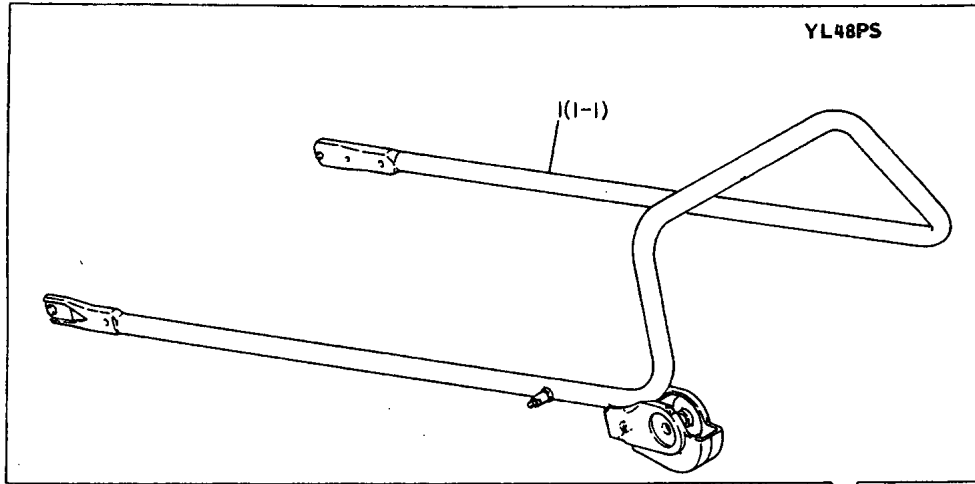
NPC-1695 11. CATCHER

(A)=YL48PS (D)=YL53TSE
(B)=YL48TS (E)=YL48TSE
(C)=YL53TS (F)=YL53TSY(E)

REF.	LEV.	PARTS NO.	DESCRIPTION	QTY						I	R
				(A)	(B)	(C)	(D)	(E)	(F)		
1	1	1E1060-43010	FRAME,CATCHER	1	1	1	1				
1-1	1	1E1060-43011 (A=F610001)	FRAME,CATCHER (B=F610001) (C=F610001) (D=F610001)	1	1	1	1	1	1	1	N
2	1	1E1060-43100	CATCHER	1	1	1	1				
2-1	1	1E1060-43101 (A=F610001)	CATCHER (B=F610001) (C=F610001) (D=F610001)	1	1	1	1	1	1	1	N

Fig.12. FAN

1 2. HANDLE



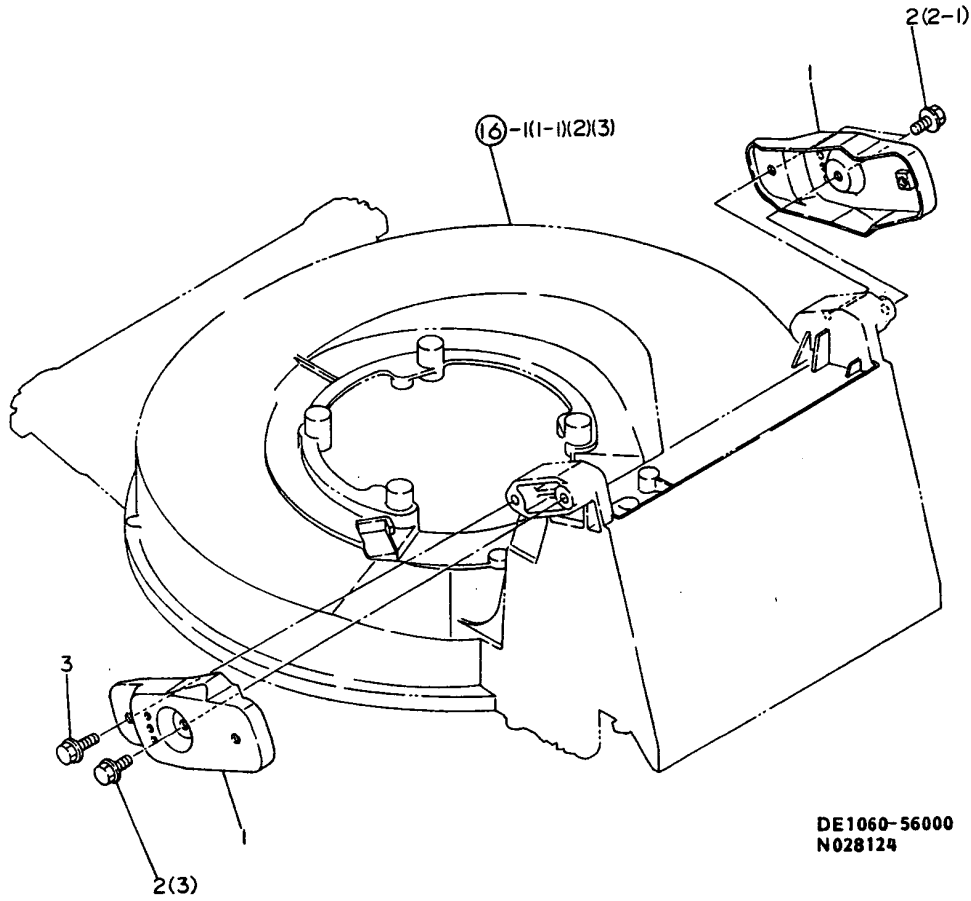
DE1060-51000
DE1060-51050
N028123

(A)=YL48PS (D)=YL53TSE
(B)=YL48TS (E)=YL48TSE
(C)=YL53TS (F)=YL53TSY(E)

REF.	LEV.	PARTS NO.	DESCRIPTION	QTY						I	R
				(A)	(B)	(C)	(D)	(E)	(F)		
1	1	1E1060-51010	HANDLE COMPL.	1							
1-1	1	1E1060-51011 (A=F610001)	HANDLE COMPL.	1							S
2	1	1E1060-51510	HANDLE COMPL.		1	1	1				
2-1	1	1E1060-51511 (B=F610001)	HANDLE COMPL. (C=F610001) (D=F610001)		1	1	1	1	1	1	S
3	1	1E1060-51100	THUMBSCREW 8X24	2	2	2	2				
3-1	1	1E1060-51101 (A=F610001)	THUMBSCREW 8 (B=F610001) (C=F610001) (D=F610001)	2	2	2	2	2	2	2	S
4	1	22137-080000 (A=F610001)	WASHER 8, POLISHED (B=F610001) (C=F610001) (D=F610001)	2	2	2	2	2	2	2	Z
5	1	22217-080000	SPRING WASHER 8	2	2	2	2	2	2	2	
6	1	26116-080404 (A=F610001)	BOLT M 8X 40 PLATED (B=F610001) (C=F610001) (D=F610001)	2	2	2	2	2	2	2	W

Fig.13. HANDLE

1 3. HANDLE STAY



DE1060-56000
N028124

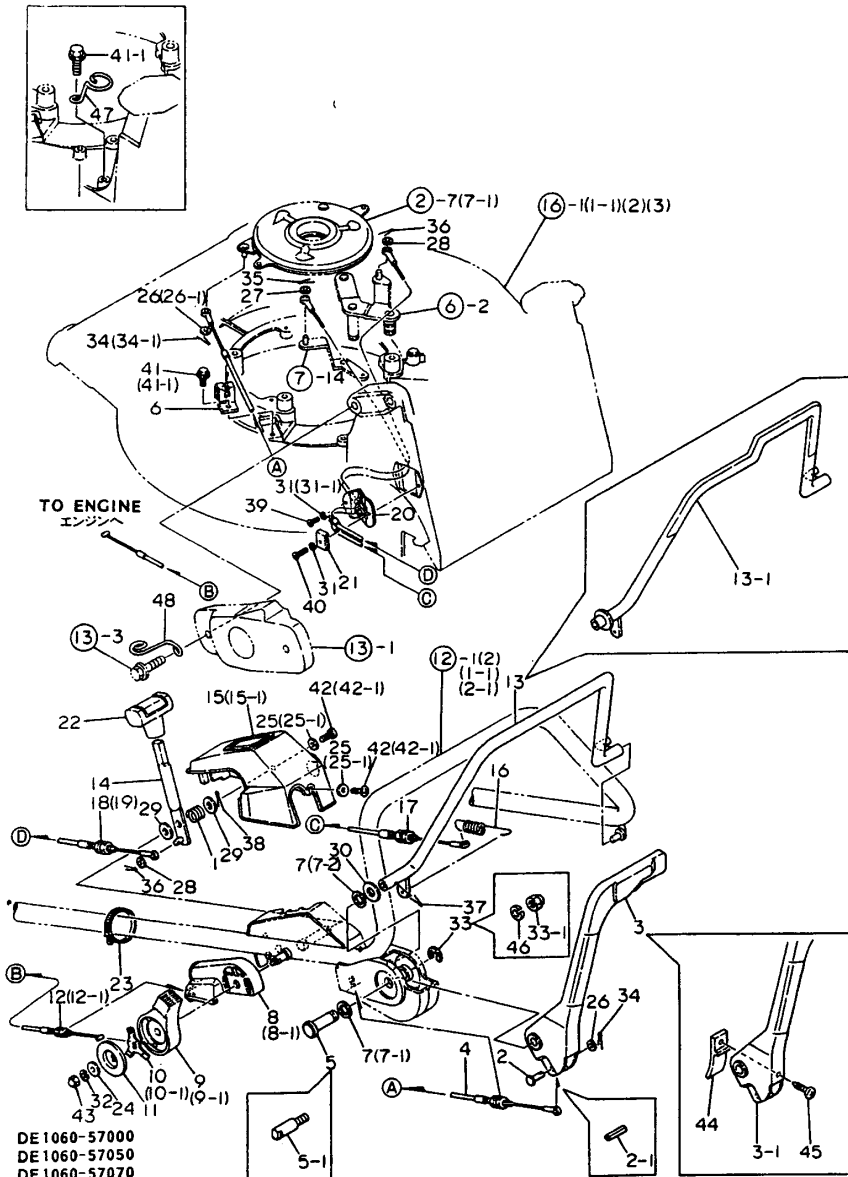
(A)=YL48PS (D)=YL53TSE
(B)=YL48TS (E)=YL48TSE
(C)=YL53TS (F)=YL53TSY(E)

REF.	LEV.	PARTS NO.	DESCRIPTION	QTY						I	R
				(A)	(B)	(C)	(D)	(E)	(F)		
1	1	1E1060-56010	STAY,HANDLE	2	2	2	2	2	2		
2	1	26476-080162	BOLT 8X16,TAPPING	4	4	4	4				
2-1	1	26476-080162	BOLT 8X16,TAPPING	2	2	2	2	2	2	2	K
		(A=FXXXXXX) (B=FXXXXXX) (C=FXXXXXX) (D=FXXXXXX)									
3	1	26476-080202	BOLT 8X20,TAPPING	2	2	2	2	2	2	2	W
		(A=FXXXXXX) (B=FXXXXXX) (C=FXXXXXX) (D=FXXXXXX)									

(A)=YL48PS (D)=YL53TSE
 (B)=YL48TS (E)=YL48TSE
 (C)=YL53TS (F)=YL53TSY(E)

Fig.14. HANDLE STAY

1 4. LEVER & WIRE



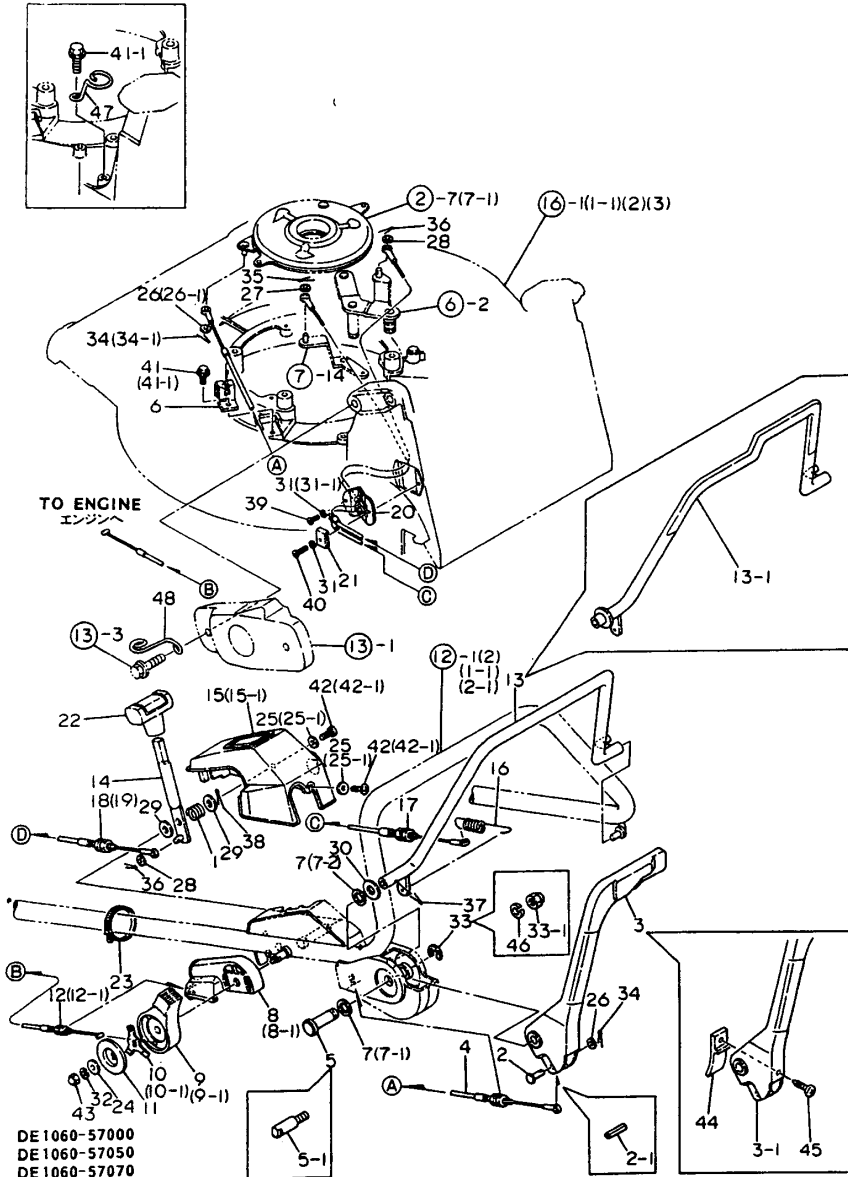
REF.	LEV.	PARTS NO.	DESCRIPTION	QTY						I	R
				(A)	(B)	(C)	(D)	(E)	(F)		
1	1	1E1060-57800	SPRING,COILED		1	1	1	1	1		
2-1	1	22351-050025 (A=F610001)	SPRING PIN 5X25 (B=F610001) (C=F610001) (D=F610001)	1	1	1	1	1	1	1	N
3	1	1E1060-57011	LEVER,CLUTCH BRAKE	1	1	1	1	1			
3-1	1	1E1060-57012 (A=F610001)	LEVER,CLUTCH BRAKE (B=F610001) (C=F610001) (D=F610001)	1	1	1	1	1			N
3-2	1	1E1060-57013 (A=FXXXXXX)	LEVER,CLUTCH BRAKE (B=FXXXXXX) (C=FXXXXXX) (D=FXXXXXX)	1	1	1	1	1	1	1	N
4	1	1E1060-57050	WIRE,CLUTCH BRAKE	1	1	1	1	1			
4-1	1	1E1060-57051 (A=FXXXXXX)	WIRE,CLUTCH BRAKE (B=FXXXXXX) (C=F710065) (D=F710065)	1	1	1	1	1	1	1	N
5	1	1E1060-57061	PIN,LEVER FULCRUM	1	1	1	1	1			
5-1	1	1E1060-57062 (A=F610001)	PIN,LEVER FULCRUM (B=F610001) (C=F610001) (D=F610001)	1	1	1	1	1	1	1	S
6	1	1E1060-57070	BRACKET A, OUTER	1	1	1	1	1	1	1	
7	1	1E1060-57080	SPRING 14X22,LOCK	1	2	2	2				Z
7-1	1	1E1060-57080 (A=F610001)	SPRING 14X22,LOCK	1							
7-2	1	1E1060-57080 (B=F610001)	SPRING 14X22,LOCK (C=F610001) (D=F610001)	1	1	1	1	1	1	1	K
8-1	1	1E1060-57101 (A=F610001)	STAND,ACCELER,LEVER (B=F610001) (C=F610001) (D=F610001)	1	1	1	1	1	1	1	N
9	1	1E1060-57110	LEVER,ACCELERATOR	1	1	1	1	1			
9-1	1	1E1060-57111 (A=F610001)	LEVER,ACCELERATOR (B=F610001) (C=F610001) (D=F610001)	1	1	1	1	1	1	1	S
10	1	1E1060-57120	SPRING,ACCELERATOR	1	1	1	1	1			
10-1	1	1E1060-57121 (A=F610001)	SPRING,ACCELERATOR (B=F610001) (C=F610001) (D=F610001)	1	1	1	1	1	1	1	N
11	1	1E1060-57130	COVER,ACCELERATOR	1	1	1	1	1	1	1	
12-1	1	1E1060-57151 (A=F610001)	WIRE,ACCELERATOR (B=F610001) (C=F610001) (D=F610001)	1	1	1	1	1			N
12-2	1	1E1060-57152 (A=FXXXXXX)	WIRE,ACCELERATOR (B=FXXXXXX) (C=F710065) (D=F710065)	1	1	1	1	1	1	1	N
13	1	1E1060-57510	LEVER,LOOP CLUTCH	1	1	1	1				
13-1	1	1E1060-57511 (B=F610001)	LEVER,LOOP CLUTCH (C=F610001) (D=F610001)	1	1	1	1	1	1	1	N
14	1	1E1060-57560	LEVER,CHANGE	1	1	1	1	1	1	1	
15-1	1	1E1060-57601 (B=F610001)	COVER,CHANGE LATCH (C=F610001)	1	1						N
15-2	1	1E1070-57601 (D=F610001)	COVER,CHANGE LATCH (D=F610001)				1	1	1	1	N
16	1	1E1060-57630	SPRING 3X104.5,TENS.	1	1	1	1	1	1	1	
17	1	1E1060-57650	WIRE,TRAVEL CLUTCH	1	1	1	1				
17-1	1	1E1060-57651 (B=FXXXXXX)	WIRE,SIDE CLUTCH (C=F710065) (D=F710065)	1	1	1	1	1	1	1	N
18	1	1E1060-57660	WIRE 48,CHANGE	1							
18-1	1	1E1060-57661 (B=FXXXXXX)	WIRE 48,CHANGE (B=FXXXXXX)	1					1		N
19	1	1E1070-57660	WIRE 53,CHANGE				1	1			
19-1	1	1E1070-57661 (C=F710065)	WIRE 53,CHANGE (C=F710065) (D=F710065)				1	1		1	N
20	1	1E1060-57700	BRACKET B, OUTER	1	1	1	1	1	1	1	
21	1	1E1060-57740	FITTINGS,WIRE	1	1	1	1	1	1	1	
22	1	1E6570-64750	GRIP 13,CHANGE LEVER	1	1	1	1				

++ CONTINUE ++

Fig.14. HANDLE STAY

(A)=YL48PS (D)=YL53TSE
 (B)=YL48TS (E)=YL48TSE
 (C)=YL53TS (F)=YL53TSY(E)

1 4. LEVER & WIRE

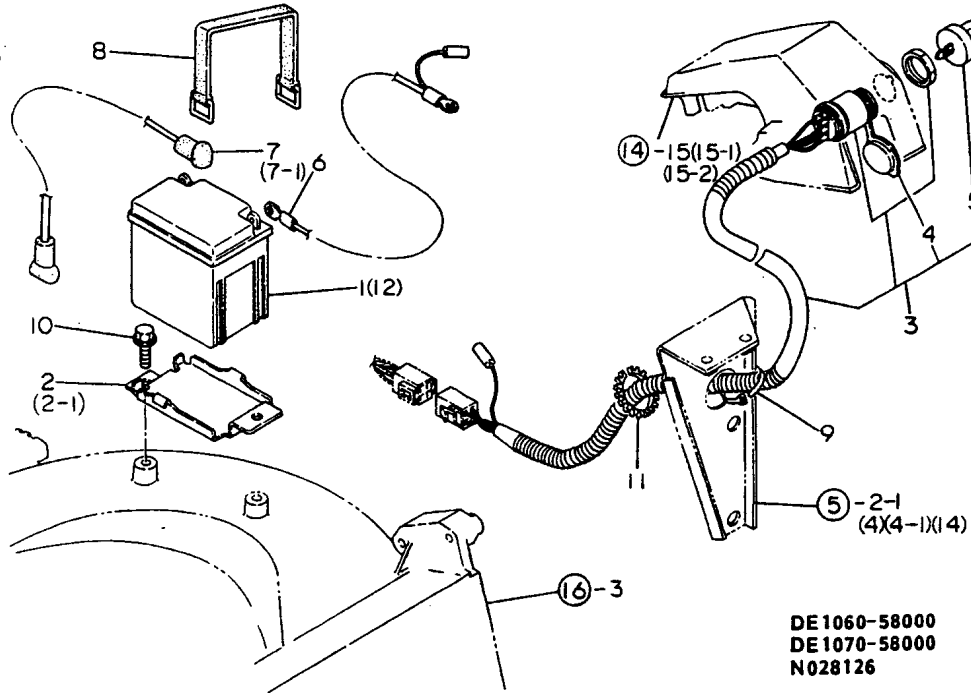


DE1060-57000
 DE1060-57050
 DE1060-57070
 DE1070-57050
 DE1070-57100
 N028125

REF.	LEV.	PARTS NO.	DESCRIPTION	QTY						I	R
				(A)	(B)	(C)	(D)	(E)	(F)		
22-1	1	1E6570-64751 (B=FXXXXXX)	GRIP 13,CHANGE LEVER (C=FXXXXXX) (D=FXXXXXX)	1	1	1	1	1	1		R
23	1	1E6102-84970	BAND 140,WIRE LOCK	2	3	3	3	3	3		
24	1	1E4241-99200	WASHER 7X20X2.3	1	1	1	1	1	1		
25	1	1E4030-99230	WASHER 6X16X1		3	3	3				
25-1	1	1E6690-61460 (B=F610001)	WASHER 6X16X1,PLAIN (C=F610001) (D=F610001)		3	3	3	3	3		N
26	1	22137-060000	WASHER 6, POLISHED	2	2	2	2				
26-1	1	22137-060000 (A=F610001)	WASHER 6, POLISHED (B=F610001) (C=F610001) (D=F610001)	1	1	1	1	1	1	1	K
27	1	22137-060000	WASHER 6, POLISHED		1	1	1	1	1		
28	1	22137-060000	WASHER 6, POLISHED		2	2	2	2	2		
29	1	22137-100000	WASHER 10,POLISHED		2	2	2	2	2		
30	1	22137-140000 (B=F610001)	WASHER 14,POLISHED (C=F610001) (D=F610001)		1	1	1	1	1		Z
31	1	22217-040000	SPRING WASHER 4		2	2	2				
31-1	1	22217-040000 (B=FXXXXXX)	SPRING WASHER 4 (C=FXXXXXX) (D=FXXXXXX)		1	1	1	1	1		K
32	1	22217-060000	SPRING WASHER 6		1	1	1	1	1		
33	1	22272-000100	CIRCLIP E-10		2	2	2	2	2		
33-1	1	26657-080002	CAP NUT M 8		1	1	1	1			S
33-2	1	26658-080002 (A=FXXXXXX)	CAP NUT M 8 (B=FXXXXXX) (C=FXXXXXX) (D=FXXXXXX)		1	1	1	1	1	1	R
34	1	22417-200120	COTTER PIN 2.0X12		2	2	2	2			
34-1	1	22417-200120 (A=F610001)	COTTER PIN 2.0X12 (B=F610001) (C=F610001) (D=F610001)		1	1	1	1	1	1	K
35	1	22417-200120	COTTER PIN 2.0X12		1	1	1	1	1		
36	1	22417-200120	COTTER PIN 2.0X12		2	2	2	2	2		
37	1	22417-250200 (B=F610001)	COTTER PIN 2.5X20 (C=F610001) (D=F610001)		1	1	1	1	1		Z
38	1	22417-250200	COTTER PIN 2.5X20		1	1	1	1	1		
39	1	22857-400120	SCREW 4X12		1	1	1	1	1		
40	1	22857-400200	SCREW 4X20,TAPPING		1	1	1	1	1		
41	1	26476-060122	BOLT M 6X 12,TAPPING		1	1	1	1	1		
41-1	1	26476-060122	BOLT M 6X 12,TAPPING		2						K
42	1	26557-060162 (A=F610001)	SCREW M 6X 16 (B=F610001) (C=F610001) (D=F610001)		3	3	3				
42-1	1	1E6690-61450	SCREW 6X16,BIND.HD.		3	3	3	3	3		N
43	1	26658-060002	CAP NUT 6		1	1	1	1	1	1	
44	1	1E1060-57200	PLATE,LEVER CONTACT		1	1	1	1	1	1	W
45	1	1G0010-82850 (A=F610001)	SCREW 4X12,TAPPING (B=F610001) (C=F610001) (D=F610001)		1	1	1	1	1	1	W
46	1	22217-080000 (A=F610001)	SPRING WASHER 8 (B=F610001) (C=F610001) (D=F610001)		1	1	1	1	1	1	W
47	1	1E1060-57850 (A=F610001)	ROD,WIRE GUIDE (B=F610001) (C=F610001) (D=F610001)		1	1	1	1	1	1	W
48	1	1E1060-57860 (A=FXXXXXX)	PIPE,WIRE GUIDE UPPR (B=FXXXXXX) (C=F710065) (D=F710065)		1	1	1	1	1	1	W

Fig.15. LEVER & WIRE

1 5. ELECTRICAL PARTS



DE 1060-58000
DE 1070-58000
N028126

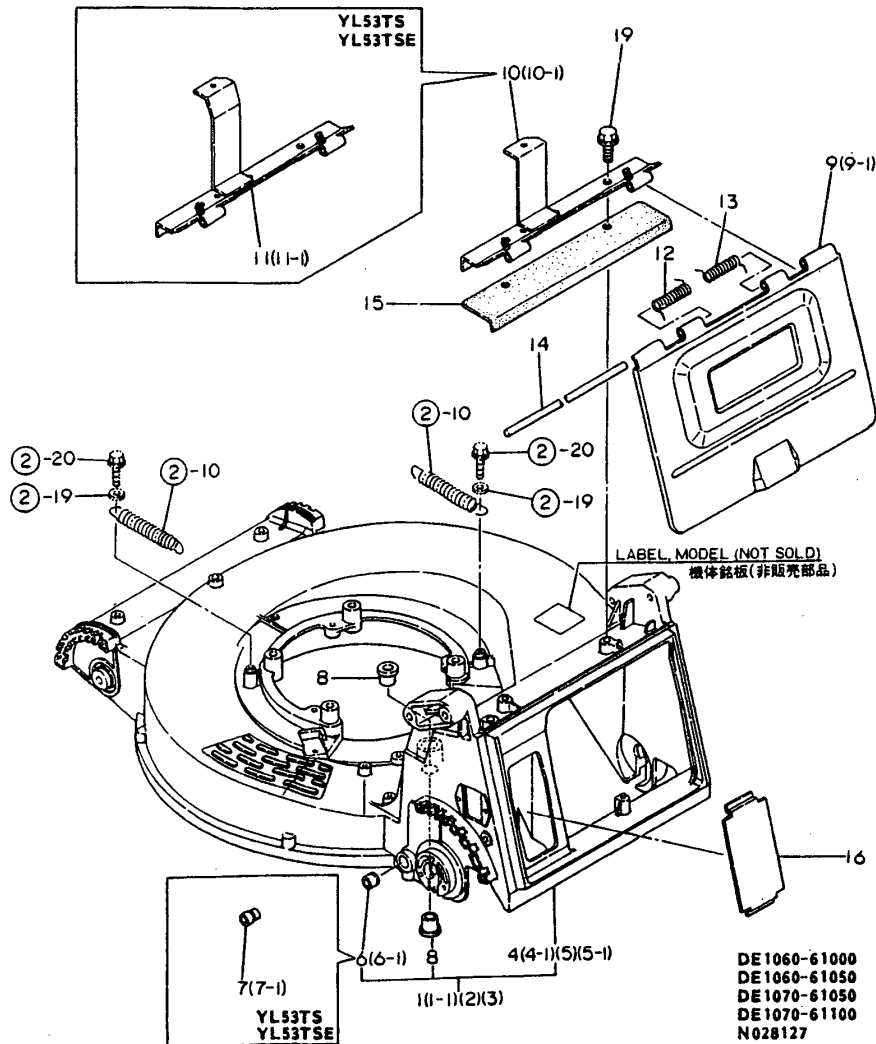
(A)=YL48PS (D)=YL53TSE
(B)=YL48TS (E)=YL48TSE
(C)=YL53TS (F)=YL53TSY(E)

REF.	LEV.	PARTS NO.	DESCRIPTION	QTY						I	R	
				(A)	(B)	(C)	(D)	(E)	(F)			
1	1	1E1070-58050	BATTERY YT5L-12				1					
2	1	1E1070-58070	BRACKET,BATTERY				1					
2-1	1	1E1070-58071	BRACKET,BATTERY				1	1	1	1	N	
3	1	1E1070-58100	HARNESS,SWITCH (D=F610001)				1					
3-1	1	1E1070-58101	HARNESS,SWITCH (D=FXXXXXX)				1	1	1	1	R	
4	2	1C6141-55530	CAP,WATERPROOF				1	1	1			
5	2	1A1580-59970	KEY,SWITCH				2					
5-1	2	1E1070-58140	SWITCH,KEY (D=FXXXXXX)				2	2	2	2	R	
6	1	1E1070-58150	CORD,BATTERY NEG.				1	1	1			
7	1	1E1070-58160	CORD,BATTERY POS.				1					
7-1	1	1E1070-58161	CORD,BATTERY POS. (D=F610001)				1	1	1	1	N	
I	7-2	1E1070-58162	CORD,BATTERY POS. (D=FXXXXXX)				1	1	1		N	
8	1	1A1480-62860	BAND,BATTERY (E=FXXXXXX)				1	1	1			
9	1	1E6102-84970	BAND 140,WIRE LOCK				2	2	1			
10	1	26476-080162	BOLT 8X16,TAPPING				2	2	1			
11	1	1E1070-58200	BUSHING				1					W
12	1	1E1060-58050	BATTERY YT4L-12 (D=F610001)						1	1		

Remarks
TYPE F OF THIS GROUP REPRESENT
ELECTRIC START MODEL.

Fig.16. ELECTRICAL PARTS

1 6. CASING & COVER



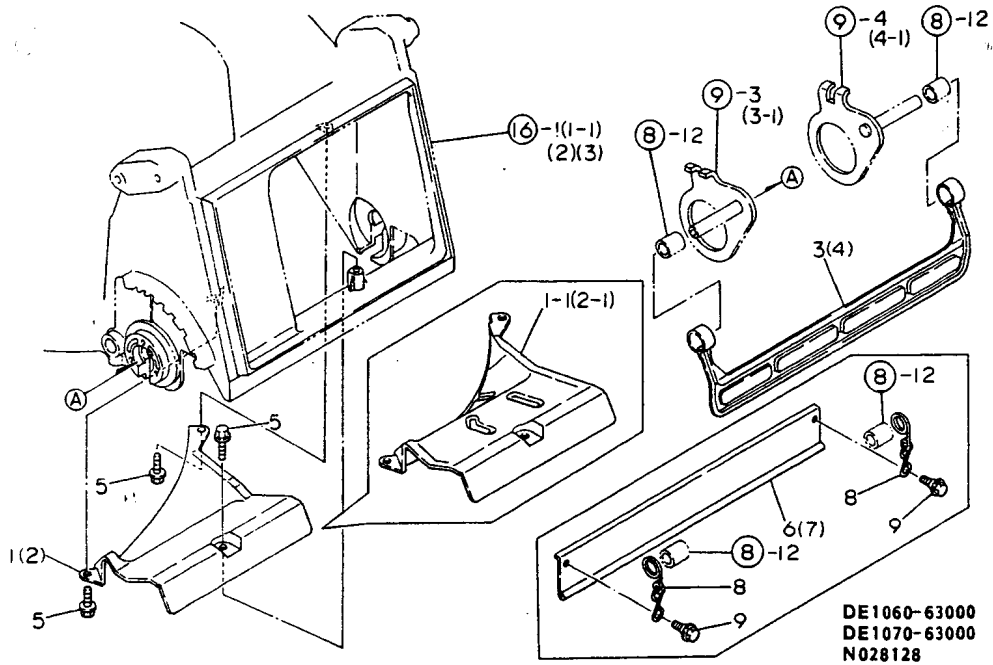
Remarks
)BLADE CASING ASSY,YL48P(FRANCE)
)BLADE CASING ASSY,YL48TS(FRANCE)
)BLADE CASING ASSY,YL53T(FRANCE)
)BLADE CASING ASSY,YL48P(U.K.)
)BLADE CASING ASSY,YL48T(U.K.)
)BLADE CASING ASSY,YL53T(U.K.)

(A)=YL48PS (D)=YL53TSE
 (B)=YL48TS (E)=YL48TSE
 (C)=YL53TS (F)=YL53TSY(E)

REF.	LEV.	PARTS NO.	DESCRIPTION	QTY						I	R
				(A)	(B)	(C)	(D)	(E)	(F)		
1-1	1	1E1060-61011 (A=F610001)	CASING P,BLADE	1							N
1-2	1	1E1060-61012 (A=FXXXXXX)	CASING P,BLADE	1							N
2	1	7E1060-99041	BLADE CASING W/LABEL		1			1			
3	1	7E1070-99041	BLADE CASING W/LABEL			1	1		1		
4-1	2	1E1060-61021 (B=F610001)	CASING T,BLADE		1						N
4-2	2	1E1060-61022 (B=FXXXXXX)	CASING T,BLADE		1			1			N
5-1	2	1E1070-61021 (C=F610001) (D=F610001)	CASING T,BLADE			1	1		1		N
6	2	1E1060-61030	BUSH 8.5X15X11		1						
6-1	2	1E1060-61031 (B=F610001)	BUSH 8.5X15X11		1			1			N
7	2	1E1070-61040	BUSH 8.5X15X17.3			1	1				
7-1	2	1E1070-61041 (C=F610001) (D=F610001)	BUSH 8.5X15X17.3			1	1		1		N
8	2	1E4060-73100	METAL,DRIVEN PULLEY		2	2	2				
8-1	1	1E1060-22050 (B=FXXXXXX) (C=FXXXXXX) (D=FXXXXXX)	METAL 1216,COLLAR		2	2	2	2	2		N
9	1	1E1060-61050	COVER,CATCH	1	1	1	1				
9-1	1	1E1060-61051 (A=F610001) (B=F610001) (C=F610001) (D=F610001)	COVER,CATCH	1	1	1	1	1	1	1	N
10-1	1	1E1060-61061 (A=F610001) (B=F610001)	SEAT,COVER MTG.	1	1				1	1	N
11-1	1	1E1070-61251 (C=F610001) (D=F610001)	SEAT,COVER MTG.			1	1				N
12	1	1E1060-61110	SPRING A,COVER RETRN	1	1	1	1	1	1	1	
13	1	1E1060-61120	SPRING B,COVER RETRN	1	1	1	1	1	1	1	
14	1	1E1060-61130	PIN 8X285	1	1	1	1	1	1	1	
15	1	1E1060-61150 (A=F610001) (B=F610001) (C=F610001) (D=F610001)	STOPPER,CATCH SCATTR	1	1	1	1				Z
16	1	1E1060-61160	COVER,CASING		1	1	1	1	1	1	
17	1	1E4030-99230 (A=F710001) (B=F710001) (C=F710001) (D=F710001)	WASHER 6X16X1	2	2	2	2				Z
18	1	26476-060122 (A=F710001) (B=F710001) (C=F710001) (D=F710001)	BOLT M 6X 12,TAPPING	2	2	2	2				Z
19	1	26476-080162	BOLT 8X16,TAPPING	1	1	1	1	1	1	1	

Fig.17. CASING & COVER

1 7. SCRAPER & GUARD



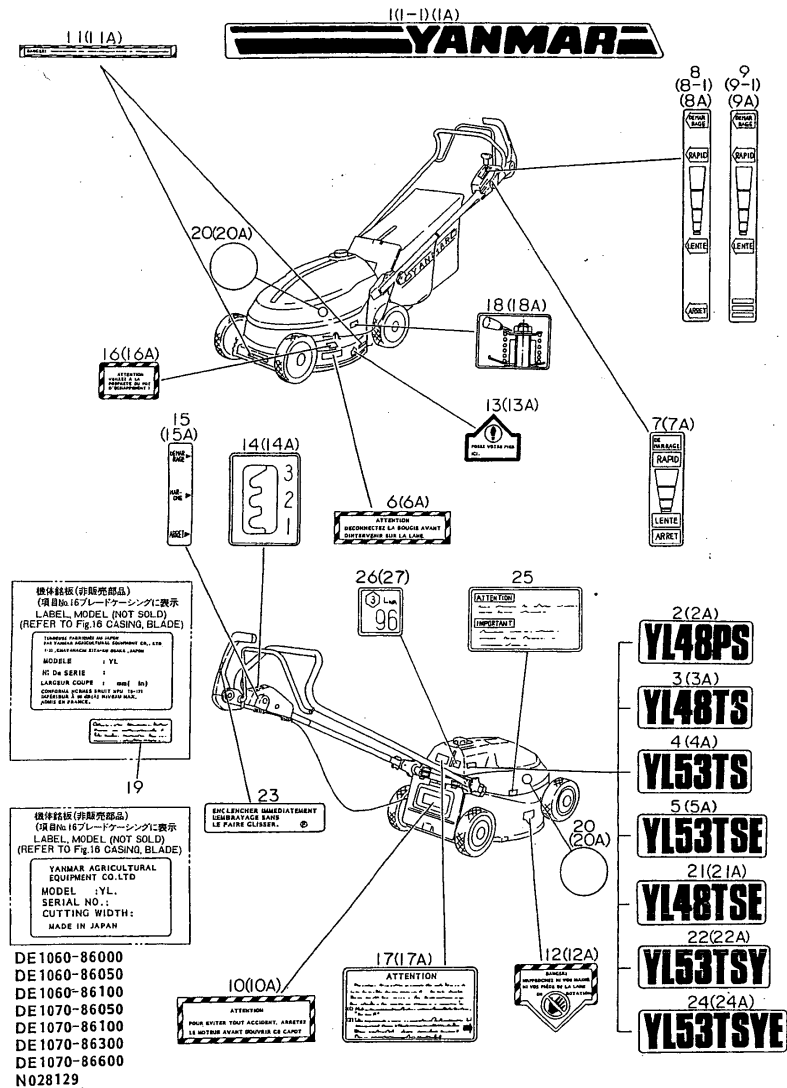
(A)=YL48PS (D)=YL53TSE
 (B)=YL48TS (E)=YL48TSE
 (C)=YL53TS (F)=YL53TSY(E)

REF.	LEV.	PARTS NO.	DESCRIPTION	QTY						I	R
				(A)	(B)	(C)	(D)	(E)	(F)		
1-1	1	1E1060-63012 (A=F610001) (B=F610001)	GUIDE 48,GRASS	1	1						N
1-2	1	1E1060-63013 (A=FXXXXXX) (B=F610556)	GUIDE 48,GRASS	1	1			1			N
2-1	1	1E1070-63012 (C=F610001)	GUIDE 53,GRASS			1	1				N
2-2	1	1E1070-63013 (C=F610485)	GUIDE 53,GRASS			1	1		1		N
I 3	1	1E1060-63020 (A=F510049) (B=FXXXXXX)	GUARD 48,STONE	1	1						Z 1
I 4	1	1E1070-63020 (C=FXXXXXX) (D=FXXXXXX)	GUARD 53,STONE			1	1				Z 2
5	1	26476-060122	BOLT M 6X 12,TAPPING	3	3	3	3	3	3		
6	1	1E1060-63100 (A=F510049) (B=FXXXXXX)	PLATE,STONE GUARD	1	1				1		W 1
7	1	1E1070-63100 (C=F610001)	PLATE,STONE GUARD			1	1			1	W 2
8	1	1E1060-63150 (A=F610001) (B=F610001) (C=F610001) (D=F610001)	HOOK,STONE GUARD	2	2	2	2				W
8-1	1	1E1060-63151 (A=FXXXXXX) (B=FXXXXXX) (C=FXXXXXX) (D=FXXXXXX)	HOOK,STONE GUARD	2	2	2	2	2	2	2	R
9	1	1E1060-63250 (A=F610001) (B=F610001) (C=F610001) (D=F610001)	BOLT 6X10,STEPPED	2	2	2	2	2	2	2	W

Remarks
 1)INDEX NO.3 REFERS NO.6,8,9 WHICH ARE INTERCHANGABLE
 2)INDEX NO.4 REFERS NO.7,8,9 WHICH ARE INTERCHANGABLE

Fig.18. SCRAPER & GUARD

1 8. LABELS



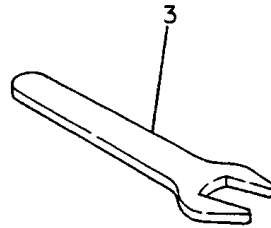
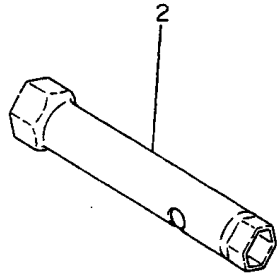
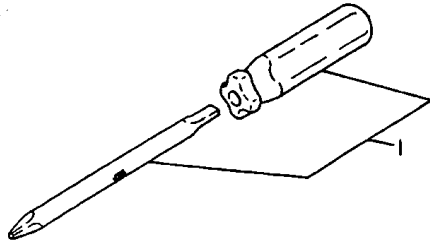
Remarks
1)INDEX NO.1A-24A ARE EXCLUSIVE FOR U.K. VERSION
2)INDEX NO.19 IS EXCLUSIVE FOR FRENCH VERSION
3)INDEX NO.24 IS EXCLUSIVE FOR MODEL YL53TSYE.

(A)=YL48PS (D)=YL53TSE
(B)=YL48TS (E)=YL48TSE
(C)=YL53TS (F)=YL53TSY(E)

REF.	LEV.	PARTS NO.	DESCRIPTION	QTY						I	R
				(A)	(B)	(C)	(D)	(E)	(F)		
23	1	1E1060-86920 (A=FXXXXXX) (B=FXXXXXX) (C=FXXXXXX) (D=FXXXXXX)	LABEL F, BLADE LEVER	1	1	1	1	1	1	1	W
23A	1	1E1060-86930	LABEL E, BLADE LEVER	1	1	1	1	1	1	1	1
24	1	1E1070-86100	MARK "53TYE", MODEL							1	3
24A	1	1E1070-86100	MARK "53TYE", MODEL							1	1
I 25	1	1E1070-86800	LABEL F, OIL CAUTION		1	1	1	1	1	1	W
I 26	1	1E1060-86910 (B=F710638) (C=F710631) (D=F710261) (E=F710196) (F=F710361) (B=F810201) (E=F810101)	MARK 96, EC PASSING		1				1	1	W
I 27	1	1E1070-86910 (C=F810001)	MARK 100, EC PASSING			1					W

Fig.19. LABELS

19. TOOLS



**DE1060-87000
N028130**

NPC-1695 19. LABELS

(A)=YL48PS (D)=YL53TSE
(B)=YL48TS (E)=YL48TSE
(C)=YL53TS (F)=YL53TSY(E)

REF.	LEV.	PARTS NO.	DESCRIPTION	QTY						I	R
				(A)	(B)	(C)	(D)	(E)	(F)		
1	1	1C6052-88060	SCREWDRIVER,COMBINAT	1	1	1	1	1	1		
2	1	1E4150-99260	BOX WRENCH 13X21	1	1	1	1	1	1		
3	1	1E1060-87100	WRENCH 10 SINGLE	1	1	1	1				Z
(A=F610001) (B=F610001) (C=F610001) (D=F610001)											

2 0 . FAN

(A)=YL48PS (D)=YL53TSE
 (B)=YL48TS (E)=YL48TSE
 (C)=YL53TS (F)=YL53TSY(E)

REF.	LEV.	PARTS NO.	DESCRIPTION	QTY						I	R
				(A)	(B)	(C)	(D)	(E)	(F)		
1	1	1E1060-42050	FAN, BLADE	1	1	1	1	1	1		
2	1	26016-060122	BOLT M 6X 12	4	4	4	4	4	4		

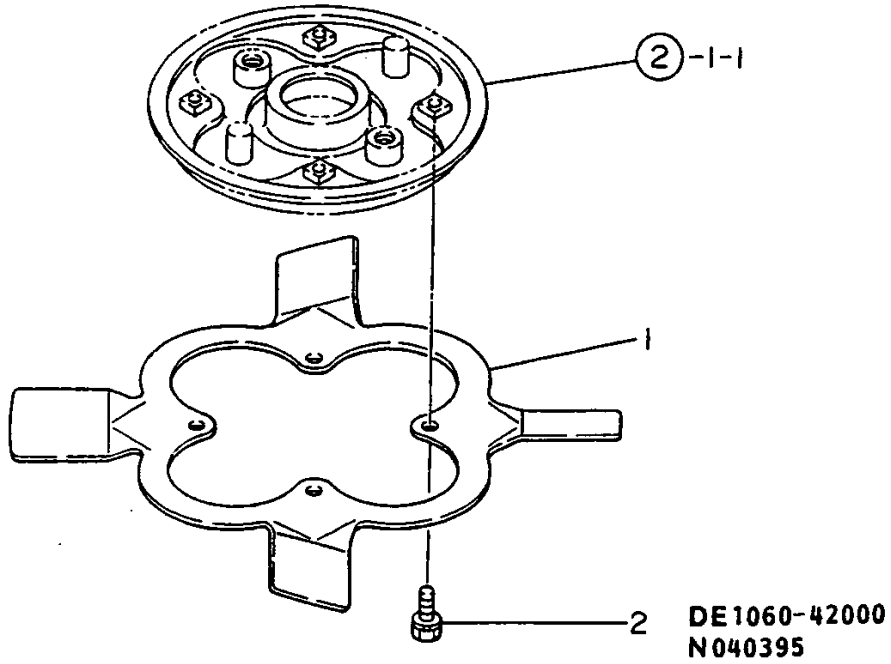
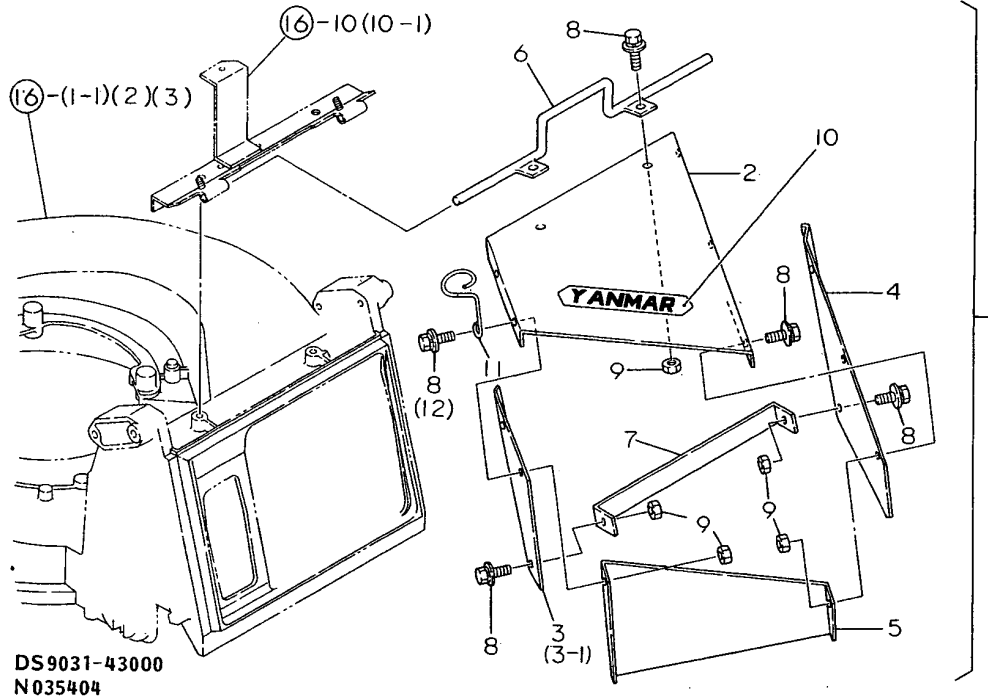


Fig.21. DEFLECTOR

2 1. DEFLECTOR



DS9031-43000
N035404

(A)=YL48PS (D)=YL53TSE
(B)=YL48TS (E)=YL48TSE
(C)=YL53TS (F)=YL53TSY(E)

REF.	LEV.	PARTS NO.	DESCRIPTION	QTY						I	R
				(A)	(B)	(C)	(D)	(E)	(F)		
1	1	7S9031-43000	DEFLECTOR ASSY	1	1	1	1	1	1		
2	2	1S9031-43610	DEFLECTOR,UPPER	1	1	1	1	1	1		
3	2	1S9031-43630	DEFLECTOR L	1	1	1	1	1	1		
3-1	2	1S9031-43631	DEFLECTOR L	1	1	1	1	1	1	1	N
		(A=FXXXXXX) (B=FXXXXXX) (C=FXXXXXX) (D=FXXXXXX)									
4	2	1S9031-43650	DEFLECTOR R	1	1	1	1	1	1		
5	2	1S9031-43670	DEFLECTOR,REAR	1	1	1	1	1	1		
6	2	1S9031-43580	HANGER COMPL.	1	1	1	1	1	1		
7	2	1S9031-43690	STAY,DEFLECTOR	1	1	1	1	1	1		
8	2	26018-060124	BOLT M 6X 12	9	9	9	9	9	9		
I 8-1	2	26018-060124	BOLT M 6X 12	8	8	8	8	8	8	8	K
		(A=FXXXXXX) (B=FXXXXXX) (C=FXXXXXX) (D=FXXXXXX) (E=FXXXXXX) (F=FXXXXXX)									
9	2	26717-060002	NUT 6	9	9	9	9	9	9		
10	2	1A1270-88230	LABEL,WHEEL COVER	1	1	1	1	1	1		
11	2	1S9031-43710	HOOK,WIRE	1	1	1	1	1	1	1	W
		(A=FXXXXXX) (B=FXXXXXX) (C=FXXXXXX) (D=FXXXXXX)									
I 12	2	26018-080164	BOLT M 8X 16	1	1	1	1	1	1	1	W
		(A=FXXXXXX) (B=FXXXXXX) (C=FXXXXXX) (D=FXXXXXX) (E=FXXXXXX) (F=FXXXXXX)									